

MELFORD

Issue 12 – February/March

Matters



Photo: Steve Thomson

Lambing at Kentwell

Events to look forward to this Spring at Kentwell Hall

Page 15

Festive Long Melford

How over £5,000 was raised for some of Melford's good causes

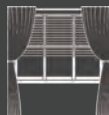
Page 16

New Businesses

Meet the people behind four of Melford's newest businesses

Page 12

info@bespokeblindslm.co.uk



Tel: 01787 371387

BESPOKE BLINDS AND CURTAINS

— LONG MELFORD —



Made to Measure Blinds & Curtains

Roller Blinds | Vertical Blinds | Venetian Blinds | Roman Blinds | Pleated Blinds
Shutters | Curtains | Poles & Tracks | Accessories

Why Choose Bespoke Blinds

We offer a full and bespoke service
No obligation measuring and home
consultation
Professional fitting service

Extensive range of curtain and blind samples
Excellent customer service
Child safety compliance to current safety laws
BBSA Members

www.bespokeblindslm.co.uk

Bespoke Blinds & Curtains
1 Brinkleys, Hall Street, Long Melford, Sudbury, Suffolk, CO10 9JR



ROBINS ROW

Insurance Brokers Since 1867

AN INDIVIDUAL SERVICE FOR ALL YOUR COMMERCIAL AND PERSONAL INSURANCE

**SPECIALISING IN MID TO HIGH VALUE HOMES,
COUNTRY HOUSES AND LISTED PROPERTIES
AND ALL COMMERCIAL INSURANCE SOLUTIONS**

TEL: (01787) 378205

EMAIL: ADMIN@ROBINSROW.COM

HALL STREET, LONG MELFORD, SUDBURY CO10 9JB

AUTHORISED AND REGULATED BY THE FINANCIAL CONDUCT AUTHORITY

Editorial

What were you doing in mid-January?

The editorial team at Melford Matters was busily rewriting and redesigning sections of the magazine after the news broke of the Library and British Legion building closing.

Pre-Covid, I'd normally be in the Alps or the Rockies in mid-January researching ski resorts for the ski guidebooks I edited.

I wonder what the good folks of

Babergh and Suffolk County Councils were doing.



Certainly not trying to reduce the astronomic amounts they charge for their services is my guess.

If you want some startling revelations, see pages 20 and 21 where you'll see that Suffolk Highways is quoting £100,000 plus for a new pedestrian crossing in Melford. And to be allowed to spend £50,000 on a new toddlers' play area in the Cordell Place playground, Babergh is asking the Parish Council to take over the whole playground (which would mean spending £130,000 to bring the equipment and surfacing up to scratch).

On a happier note, isn't it great that over £5,000 was raised for local good causes during Festive Long Melford (pages 16 and 17)?

Dave Watts, Editor

Richard Kemp

County and Parish Councillor

01787 378149

richard.kemp@suffolk.gov.uk

Adam Kemp

Independent Financial Adviser

BA Hons, Dip PFS, Cert CII (MP & ER)

Pension, investment, mortgage, protection and equity release advice.

Please contact for free initial consultation:

01284 724013 (option 7) or 07988 961240

adam.kemp@amas.co.uk



Tony Read Carpentry

MDF Furniture maker,

2nd fix carpentry,

Wood-turner & kitchen fitter

Tel: 07970 559227

CLEMENTS CHIMNEY SERVICES

Levi Clements

Local chimney specialist

Including fitting of
chimney pots,
bird-guard
cowlings, liners
and sweeping



Please check our reviews

5.0 ★★★★★

07810 616837

clementschimneyservices@outlook.com

ART EXHIBITION & BORLEY BAKES

**SATURDAY & SUNDAY
25TH & 26TH MARCH**



**OPEN 10AM — 4PM
FREE ENTRY**

*** TEA, COFFEE & RAFFLE ***

Community Matters

British Legion building closed

Shortly before we went to press, Suffolk Libraries announced that the Long Melford Library had closed because they had been advised by the Royal British Legion that it intended to close the building in Melford with immediate effect.

Suffolk Libraries said "If the issue with the building is not resolved we will try and find an alternative site to provide a library service in Long Melford as quickly as possible."

The closure means that other activities due to take place in the building will also have to find alternative venues.

We asked the British Legion to confirm the closure but they told us, "We aren't in a position to comment at this time due to ongoing legal constraints with various parties."

If the property is sold

Some people think that the British Legion will try to sell the building and car park for development. If they did so, they'd have to bear in mind that the deeds to the property state that any proceeds would have to be used for the benefit of ex-servicemen living in Long Melford and adjoining parishes. And if there aren't enough ex-servicemen, the proceeds must be used for charitable purposes in Long Melford.



Happier times: some of the Friends of the Library on its opening day in the British Legion building



New Year, New Venture?

Are you new to the village? Have your circumstances changed so you have a little time to devote to something new? Would you like to 'give a little back' to others in the community?

If the answer to any of the above is Yes, then Good Neighbours would love to hear from you. We help villagers with trips to medical appointments,

befriending, little jobs around their homes, etc. To find out more, please call 07504 249179. Leave a message and someone will get back to you.

Alternatively, we have coffee mornings at the Old School from 10am for around an hour every two weeks (see Diary Matters for dates). Come along for a chat with some of the team. We look forward to meeting you there.

Suffolk Art Society
raised over £1,400
for St Nicholas
Hospice in 2022



Art Exhibitions in 2023

Class Arts (an art collective from Melford and Sudbury) will have its first exhibition of 2023 at Borley Church on Saturday 25th and Sunday 26th March. Open 10am to 4pm. Last year's exhibition was a great success and raised money for the church. This year's exhibition in Melford will be at the Old School in the autumn.

Suffolk Art Society will be holding exhibitions in Lavenham and Melford Churches and Bury Cathedral. Last year they raised over £1,400 for St Nicholas Hospice. This year's charity will be East Anglian Children's Hospice. The Melford exhibition will be at Holy Trinity from Friday 21st July till Sunday 6th August. Open 9.30am to 6pm.

Entry is free at all events.

Wanted – Advertising Assistance

Melford Matters is looking for a volunteer to help with the advertising. This involves such things as contacting current advertisers, dealing with enquiries from potential advertisers and issuing invoices. If you're interested, please contact melfordmattersadvertising@gmail.com



Community Matters

More Gardens Wanted!

Here's a big date for your diary: Long Melford Open Gardens 2023 will be on Bank Holiday Monday 29th May 10am to 4pm. Last year's event was a resounding success raising more than £4,000 for charity.

We're keen to sign up new gardens for 2023. If you have a garden, from the tiniest 'yarden' to the most opulent of offerings, we'd love you to sign up! Your garden doesn't have to be perfect. This is a charity event so why not get involved?

This year's proceeds will be split between Holy Trinity Church, Long Melford in Bloom and The Cure CJD Campaign.

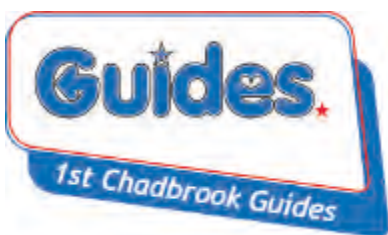
The event in 2023 features a 'spot the creature' event for the children. Tickets will be available from April at Budgens and Breakout and at any garden open on the day. Adults £7.50; free for under 16s.

Please contact Paul at The Mill if you have any questions or to sign up to open your garden: phone 01787 378035 or email contact@themill-longmelford.com



Creative Guides

The 1st Chadbrook Guides love designing and making everything for displays in the window at the Scout and Guide hut.



Last term was one of our busiest yet. We started with the memorial window for Queen Elizabeth II, when each Guide created something reflecting their feelings on this sad occasion. We then had our Remembrance window. The Guides made poppy pin wheels for the window, creating a field of poppies.

The Guides worked hard on our Christmas window. They each cut and sewed robins that were hung in the window above a forest with a wood cabin and even a deer.

We'll be celebrating Thinking Day on 22nd February which is an important day in our Guiding Year. It's a time of reflection and celebration that Guides take part in all over the world.

Melford Music – Last Year and This

Last year was our 30th year. It was also our first full season since Covid and was well supported, with an average attendance of 80 music-lovers every week.

We've been able to donate the grand sum of £4,000 to the church building fund and our grateful thanks goes to our village business sponsors plus our advertisers for their generous help.



The 2023 season will run weekly throughout June, July and August – the start date for your diary is Wednesday 7th June. We're currently booking artists and they'll include The Rock Choir, Elaine Henson (mezzo soprano) and the trio of Gill Gerrard, Rhianwen Gold and Mary Blanchard.

Good News from the Litter Pickers

Our future was looking uncertain but we're pleased to let villagers know that longstanding litter picker Gerald Lees and new member Claire Hargreaves will be holding the reins from February. The group will continue to meet on the last Sunday morning of the month and the previous Thursday afternoon. This will be the seventh year that that we've helped to keep Melford clean and tidy. If you're interested in joining us, please email longmelfordlitterpickers@gmail.com or telephone Gerald on 01787 373273.

Community Matters

The Community Association – A Vital Village Asset

The Community Association (LMCA) celebrates its 40th birthday this year. It was formed in 1983, when the Village School came up for sale.

LMCA and the Parish Council raised sufficient funds to purchase the building from Suffolk County Council.

As a Community Centre it's a successful venue for many activities, as well as regular fairs, a polling station and is currently used by the Parish Council for its meetings. A small committee oversees the running of the school and we need new members to enable us to ensure that the Old School continues as an essential asset of Melford.

Our AGM will be held at the Old School on Monday 27th March 2023, at 7pm. At this meeting, Linda Goodban will be stepping down as our Secretary – a role she performed for over 20 years. Her main task is recording the minutes of our meetings, held every two months.

Last July, we held our Produce Show at the Melford Village Fete. It was a successful day but we've decided it would be better to revert to holding the Show at the Old School on the first or second weekend of September – that will allow people to enter a wider variety of homegrown produce.

We need volunteers to help run the Old School and set up and run the Show. If you'd like to be involved, please contact Rosey on 01787 319 120 or rosey26@me.com.



We Need a new Village Recorder

We mentioned this in our last issue. But no one came forward to volunteer. It's a really important role – recording what's happening now in Melford for villagers and historians to refer to in the future. It's also a great way to learn more about the village, its people and the many clubs, groups and events. It would be a great pity if we were to become one of the few Suffolk villages without a recorder. If you're interested, please see slhc.org.uk/recorders and contact Julie on 01787 375329. Let's hope a volunteer steps forward.

The Village Hall says a goodbye and asks for help

We've bid a sad farewell to Richard and Angela Delderfield who have emigrated to Australia to join their family. As chairman of the Village Hall committee, Richard did so much to improve it and turn it into a great venue. He worked tirelessly to secure grants from various sources which enabled some huge improvements. Richard also attended

personally to any repairs and maintenance that were needed. We wish Richard and Angela all the best for their life down under.

The Village Hall is looking for a volunteer who has accountancy or bookkeeping experience, to assist the Treasurer. Knowledge of online accounting packages would be useful. If you have two to three hours a month to help, please email chair.lvmh@gmail.com

Our Pharmacy At Your Service

As well as Covid and Flu vaccinations, our wonderful pharmacy in Hall Street offers many services that you might not know about.

Free services include:

- Blood pressure checks (and they will lend those who are eligible monitors to wear for 24hrs)
- Medication reviews
- Unwanted medication disposal
- Weight and height measurement

Services you have to pay for include:

- Travel vaccinations (including yellow fever)
- Ear wax removal
- Blood Glucose screening

The supply of advice and medicines without needing a prescription to help with:



- Hair retention and weight loss
- Erectile dysfunction
- Period delay
- Urinary tract infection (including testing)

Community Matters

Favourite Events to Look Forward to at Melford Hall in 2023

The annual LeeStock Music Festival is set to return to Melford Hall Park on 27th and 28th May 2023. Whilst we await the official line up, it will no doubt be full of its usual amazing talent and be a truly family fun music festival.

Two hugely successful events that were held in the paddocks at Melford Hall for the first time last year will be returning. The 'Taste of Sudbury' Food and Drink festival will be back on 17th June, with over 65 food and drink stalls showcasing the best of Suffolk produce, plus kitchen demonstrations on a big stage.

The Village Fete will be even bigger and better than last year. So please put 8th of July in your diaries. It was so popular last year that we've extended it by an hour, so it will run from 12noon to 4pm.

All the above are subject to final agreement by the National Trust.



Events in Melford Hall's grounds should be back this year
Photo: Sudbury Market Events Ltd

This Group Is Made For Walking

Mike Turner has set up a walking group for the village. He says, "It's not a fitness or training regime but an informal social community group for like-minded people to explore our glorious Suffolk countryside in safety on foot and make new friends along the way."



All are welcome to join
Melford's new walking group

If you join in, you can suggest walks and won't be expected to go on every walk. The only stipulation is that you must be able to walk a minimum of 5 miles. The maximum will be around 15 miles but most will allow time to be spent in the destination (including a pub) before heading back. And most will have an 'opt out' – eg if you've walked to Lavenham, you can catch the bus back.

The group has only been going a few weeks but 46 people have joined already. Dogs are welcome. If you'd like more information, please call Mike on 07733 102229.

Project Seven needs volunteers

We would like to thank all the volunteers who helped at the eight events that Project Seven took part in last year. These were financially successful. But sadly, as the Big Night Out was cancelled, we incurred a loss of around £8,000 – mainly cancellation fees. This means that Project Seven will not be able to give away any donations to local good causes this year.

Regarding last year's Big Night Out, Project Seven would like to thank the volunteers who helped with site preparation and clearing up after the cancellation.

Finally, a big thank you to the ticket selling points which helped with the refunds and to the people who would not take a refund and donated to us.

Project Seven is hoping for a better 2023. We will be attending approximately eight events for which more

volunteers would be much appreciated. If you're interested in helping, why not come and meet us at **Nethergate Brewery on Wednesday 8th February at 7.30pm for 8pm** to find out more? Or call our President, Andrew Hagger, on 07980 526067.



In its 40 years, Project Seven has
given £750,000 to local good causes

Diary Matters

February	Event	Venue	Time
Wednesday 1st	Antiques Fair	Village Hall	9.00am to 3.30pm
Thursday 2nd	Good Neighbours/Friends of LM Library Coffee Morning	Old School	10.00 to 11.30am
Thursday 2nd	Parish Council: Planning/Full Meeting	Old School	7.00pm/7.30pm
Friday 3rd	Quiz	LM Football Club	7.00pm
Saturday 4th	Book Fair	Village Hall	10.00am to 4.00pm
Friday 10th	Melford Movies: Red Joan (12A)	Village Hall	7.00pm for 7.30 start
Friday 10th	Jax and Co - The Very Best of Johnny Cash (in aid of EACH)	LM Football Club	7.00pm
Wednesday 15th	The Arts Society Stour Valley: The woman who told us where to go	Village Hall	11.00am to 12 noon
Thursday 16th	Good Neighbours/Friends of LM Library Coffee Morning	Old School	10.00 to 11.30am
Thursday 16th	LM Historical & Archaeological Society: Short talks by members	Old School	7.30pm
Saturday 18th	Family Valentines Disco	LM Football Club	7.30pm
Thursday 23rd	Long Melford Litter Pickers		2.00pm
Friday 24th	Paint and Plonk (book via trudy.harman@btinternet.com)	Ivy & Bond	7.00pm
Saturday 25th	Seed Swap	Village Hall	10.00am to 12 noon
Sat 25th/Sun 26th	Antiques & Vintage Fair	Old School	9.30am to 4.00pm
Sunday 26th	Long Melford Litter Pickers		10.00am
March			
Wednesday 1st	Antiques Fair	Village Hall	9.00am to 3.30pm
Thursday 2nd	Good Neighbours/Friends of LM Library Coffee Morning	Old School	10.00 to 11.30am
Thursday 2nd	Parish Council: Planning/Full Meeting	Old School	7.00pm/7.30pm
Friday 10th	Melford Movies: The Duke (12A)	Village Hall	7.00pm for 7.30 start
Sunday 12th	Model Railway Exhibition	Village Hall	10.00am to 4.00pm
Wednesday 15th	The Arts Society Stour Valley: Overshadowed	Village Hall	11.00am to 12 noon
Thursday 16th	Good Neighbours/Friends of LM Library Coffee Morning	Old School	10.00 to 11.30am
Thursday 16th	LM Hist. & Arch. Society: The Trinity House (Lighthouse) story	Old School	7.30pm
Saturday 18th	FLUMPS Quiz	LM Football Club	7.00pm
Sunday 19th	Early Spring Car Boot Sale	LM Football Club	3.00 to 5.00pm
Thursday 23rd	Long Melford Litter Pickers		2.00pm
Saturday 25th	Book Fair	Village Hall	10.00am to 4.00pm
Sat 25th/Sun 26th	Antiques & Vintage Fair	Old School	9.30am to 4.00pm
Sunday 26th	Long Melford Litter Pickers		10.00am
Monday 27th	Long Melford Community Association AGM: All Welcome	Old School	7.00pm
Thursday 30th	Good Neighbours/Friends of LM Library Coffee Morning	Old School	10.00 to 11.30am
Thursday 30th	Psychic Night	LM Football Club	7.00pm
Friday 31st	Paint and Plonk (book via trudy.harman@btinternet.com)	Ivy & Bond	7.00pm

Diary Matters

Regular classes & workshops at Long Melford Village Memorial Hall

Mondays	Strollercise – Marina St Leger – www.strollercise.co.uk 07917 333712 New Time:	9.30 – 10.30am
Mondays	Beau Dance for 6 to 10 year olds – Holly Cook – 07512 692289	4.00 – 5.00pm
Tuesdays	Pilates – Michelle Cowcher – michellecowcher@gmail.com	10.00 – 11.00am
Tuesdays	Bounce – Jules Cooper – www.bookwhen.com/bouncelongmelford	6.00 – 8.00pm
Wednesdays	Pop Chorus – Yula Andrews – 07788 585441	7.30 – 8.30pm
Thursdays	Bounce – Jules Cooper – www.bookwhen.com/bouncelongmelford	6.00 – 8.00pm
Thursdays	Indoor Kurling (1st and 3rd Thurs) – Drop in for a free taster session	2.00 – 4.00pm
Fridays	Baby Ballet – sudbury@babyballet.co.uk 07580 693747	9.30am – 12.00pm
Monthly	Lecture series (4th Tuesday) – Suffolk Family History Society (Sudbury)	2.30 – 4.00pm
Monthly	Lecture series (3rd Wednesday) – Arts Society of Stour Valley	10.30am – 12.30pm

Regular classes & workshops at the Old School

Daily	Yoga Studio – Áine McGovern – www.longmelfordyoga.co.uk 07840 030545	See website
Mondays	Card making – Pauline Andow – 01787 228790	12.30 – 2.30pm
Mondays	Life Drawing – Tracey – 07846 928945 or tracey@voluptas.art	6.00pm – 9.00pm
Tuesdays	Upbeat (Heart Support Group) – Hilary Neeves – 01359 232678	9.00am – 1.00pm
Tuesdays	U3A Art – Vernon Lever – 01787 310511	1.30 – 4.00pm
Tuesdays	Sophia Paper Kite Yoga – Sophia – 07968 165185	6.00 – 9.00pm
Tuesdays	Yoga with Clare Turner – clareturneryoga@gmail.com	5.45 – 7.15pm
Wednesdays	Life Drawing – John Garbett – 01787 378798	10.00am – 12.30pm
Wednesdays	Keep Fit – Heather Mahony – sheather.mahony@btinternet.com	10.00 – 11.30am
Wednesdays	Friendship Dancers – Robin Hart – 01787 269613	3.00 – 5.00pm
Wednesdays	Life Drawing – Tracey – 07846 928945 or tracey@voluptas.art	6.00pm – 9.00pm
Wednesdays	Silver Band – Mike Murkin – 01787 312605	7.30 – 9.30pm
Thursdays	Strollercise – www.strollercise.co.uk – 07917 333712	6.00 to 7.00pm
Monthly	Photography Group (1st Monday) – Derek Challis – 01787 373738	Mornings
Monthly	LM Poppies (WI) (2nd Thursday) – Jane Ebejer – melfordinn@outlook.com	7.30 – 9.30pm

Regular classes & workshops at The Melford at Stoneylands (LMFC clubhouse)

Tuesdays	Beau Dance for adults – Holly Cook – 07512 692289	7.00 – 8.00pm
Thursdays	Tweens Dance Class - Holly Cook – 07512 692289	4.00 to 5.00pm
Sat/Sun	Colts and Fillies Junior Football – Ian Ambrose – 07970 384576	Call for details
Sundays	LM Veterans Football – Dan Bull – 07925 867247	Call for details

Closure of the Royal British Legion

If you were planning to attend an event at the RBL, please contact the event organiser for information about any new arrangements.

If you would like your activity or event listed here, let us know the details by emailing MelfordMattersAdvertising@gmail.com. Details for April/May need to reach us by **1st March**.

Steve White Electrical Services

Part P Domestic Installer

Fully qualified, insured and guaranteed

- Extra sockets/lights
- Fuse board changes
- Electric Showers
- Fault finding/repairs
- Outside power to garden/garage
- Immersion Heaters

FREE ESTIMATES

01787 281254 or 07920 841041



Over 20 years experience
Boiler Servicing and Installations
Landlord Gas Safety Checks
Full heating system power flushing

BB Plumbing and Heating

Ben Boxall

Mobile: 07894 856366

Based in Long Melford



Melford Matters is a not-for-profit community initiative funded through advertising and donations. It is produced and distributed by volunteers and printed by Indigo Ross Design & Print Ltd. The magazine welcomes contributions from everyone in the village.

For further information please refer to the Long Melford Village Hall website, <https://www.longmelfordvillagehall.co.uk/melford-matters>, or email the editor, melfordmatterseditor@gmail.com, or advertising team, melfordmattersadvertising@gmail.com.

Melford Movies

Coming up on **10th February** we will be showing **Red Joan (12A)**, the true story of Joan Stanley (played by the perennially compelling Judi Dench) whose contented retirement is suddenly disrupted by an accusation of spying for the KGB during her early career at a weapons research facility.

Technical difficulties prevented us showing **The Duke (12A)** in January but we are pleased to say that the screening has been rescheduled for **10th March**. Many thanks to everyone who turned out on a cold January evening – we do hope the revised date will be convenient. With Jim Broadbent as an unlikely

art thief and Helen Mirren as his long-suffering wife, it promises to be a very entertaining film.

We were very sorry to hear recently of the passing of Reg McKenna who (amongst other significant contributions to the village) founded Melford Movies and was the driving force behind the investment in equipment and facilities which make our screenings possible. In his memory, our raffle in March will be in aid of the Alzheimers Society.

Doors open at 7pm, with the film starting at 7.30pm.

Adults £5; Under-16s £3.

We look forward to welcoming you. For further information, to reserve seats or to join the team, contact us at melfordmovies@icloud.com.





GOOD RESOLUTIONS ON THE WANE? DREARY REALITY SET IN DESPITE THE CUSP OF SPRING?

THE ARTS SOCIETY STOUR VALLEY BECKONS

On the 3rd Wednesday of each month at 11am
at The Village Hall (opp The Bull)

We offer illustrated Monthly Talks, Visits,
Special Interest Days, a quarterly magazine and
much more – all at a very reasonable cost.

FOR FURTHER DETAILS and to get your name onto
the temporary membership waiting list, **contact:**
info@TASstourvalley.org.uk quoting **MM10** or via our
website: www.TASstourvalley.org.uk

WEDNESDAY 15 FEBRUARY 2023

THE WOMAN WHO TOLD US WHERE TO GO

The transformation of Britain with road sign systems from
typeface to colours & shapes & created the look of British
Rail, the NHS, airports.

WEDNESDAY 15 MARCH 2023

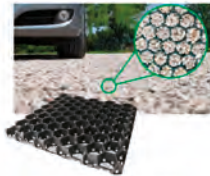
OVERSHADOWED

Fine Artists whose works have been overshadowed by
those better known such as Leonardo or Rembrandt

suregreen
...delivered in a click

**YOUR LOCAL TIMBER &
LANDSCAPING SUPPLIER**

**GROUND
REINFORCEMENT**



**STONES, CHIPPINGS
& GABIONS**



**HANDMADE
FENCE PANELS**



**RAILWAY SLEEPERS
& DECKING**



**CALL OR EMAIL US FOR A QUOTE
VIEW MORE PRODUCTS ONLINE**

**High Quality,
Low Prices**

**Thousands of
Products**

**Rated 4.6 ★
by Customers**

**Same-Day
Click & Collect**

01376 503869

sales@sure-green.com

www.sure-green.com

www.facebook.com/suregreenltd

Suregreen Ltd
Viridis House
Toppesfield Road
Finchingfield, Essex
CM7 4NZ

SONGS OF PRAISE

"A huge thank you to Mark Wilkins at Winkworth. He epitomises the term 'Gentleman'. He was always available and nothing was too much trouble. Our house sold very quickly and Mark then worked with us to progress to completion day. Laura and I would certainly recommend Winkworth but also believe that Mark's care and attention was the key to our successful sale"

MR SMITH & MS STANTON-DAVIS

Winkworth

01787 326740
longmelford@winkworth.co.uk

The Stables, Hall Street,
Long Melford, CO10 9JT

Established 1835 with 100 high street offices nationwide



Business Matters

New Businesses Booming in Melford

It's so encouraging to see that Long Melford still has many independent shops and outlets and that over the last few months even more have opened. It seems that Melford is bucking the national trend and here we showcase some of the new businesses and the people behind them. It's so important to try and support Melford's businesses by shopping locally.

A Greener Way to Buy Clothes

Katie Green, a Melford resident, artist and weaver, recently decided to take the plunge and rekindle a business that she used to run with her mother, Erica, in Monks Eleigh. In December, Katie opened LOVE THIS Clothes Agency, where a large selection of women's 'pre-loved' (ie second-hand) and some new clothes are available.

The clothes are all handpicked by Katie and she tells us that the best sellers are daywear pieces, such as tops, tunics, jumpers and dresses.

If you're interested in using the agency, call Katie on 07305 007193 to make an appointment. Once items are accepted the clothes will be displayed for sale for two months. At the end of the selling period, the client will get 50% commission of the selling price if sold. Any unsold items can be picked up by the client or donated to charity. The concept ticks many boxes as it enables buyers and sellers to help each other, clothes stay in use for longer thus avoiding landfill and the stock is unique and is constantly changing.

When asked why she set up shop in Melford, Katie says, "Customers want to shop for products that have integrity from people who are passionate about what they do. Walk into any Long Melford business and that's exactly what you'll find, it's a fantastic village and I am proud to live and work in it."

LOVE THIS Clothes Agency is located on the 2nd floor in the Melford Antiques, Interiors and Lifestyle centre and open 7 days a week. Facebook @lovethisagency

A Great Find!

Joan Allen Electronics Ltd specialises in all things to do with metal detecting. The business was founded in 1968 and moved from Kent to Long Melford last July. The owners for the past 12 years, Syrie and Luke Mahoney, chose Melford as their base, mainly because two of their key staff members live in East Anglia and they wanted to be central to Essex and Suffolk. Syrie says "Melford has great independent shops and good, free parking – much better than Hadleigh!"

The shop serves as a showroom holding a range of metal detectors, two-way radios, headphones and other accessories as well as books. It also acts as the hub for repairs, advice and a place to get help on identifying finds. The team is also keen to encourage responsible detecting – adhering to the Metal Detecting Code of Conduct, which they'll tell you about.

Their customer base is far reaching and as well as UK sales, they also export. The team is so enthusiastic and says metal detecting is a brilliant hobby for all ages. Syrie and Luke enjoy going to rallies with their 12-year-old son, and, whilst father and son are keen detectorists, Syrie enjoys the more social side and being outdoors.



An exciting and innovative clothes outlet from Katie Green

Business Matters

Luke's biggest find was more than 1,000 silver coins on land belonging to The Lyndsey Rose pub in Lyndsey near Monk's Eleigh in 2020 – thought to be worth around £150,000.

Detecting is particularly popular with ex-service veterans and can help with PTSD and other mental health issues.

The team is delighted to welcome anyone dropping in, and, if you're interested in finding out more about how to start detecting, they would love to help get you set up. You'll find them in Hall Street (next door to Nutmeg).



Meet Melford's
Detectorists

The Point of the Matter

At just 19 years old Oli Norman opened his second branch of On Point Barbers in Melford last August. Oli says, "Being in Long Melford has been great and it has become a very busy shop with three professional barbers and two trainee apprentices who are on the Level 3 Barbering course at West Suffolk College – it's great to be able to help them on their journey into the industry."

They have built a large client base, with customers coming from many surrounding villages, as well as from



This young entrepreneur plans to have a trio of barber shops by the end of this year – Melford is his second

Sudbury and Long Melford itself. Oli's clients have really welcomed him into the village, as have other businesses, which makes working in Long Melford a real pleasure. Oli says, "Melford is a growing, upcoming busy high street with great independent businesses; we all work as a team to make the village a happy and interesting place for all the residents and tourists."

On Point is based in Smaley Lane, off Hall Street and is open Monday to Fridays. It offers traditional male grooming services, from haircuts to beard trims and wet shaves. Wet shaves are barber Ricky's speciality and he's appeared on stage at barber events across the country, including performing at Britain's Best Shave at the Excel Centre in London.

They cater for all ages from children to seniors, and they try to make the trip to the barbers a comfortable experience especially for their young customers by putting on children's TV shows. And all clients are offered refreshments. Due to high demand, they offer a booking service; walk-ins are also welcomed, so pop in.

Another branch will be opening this year in Bury St Edmunds. Oli says, "If the success of the Long Melford branch is anything to go by, it should do well...and let's hope the customers are as welcoming as you all are!"

Another new business overleaf →

Business Matters

It's a Family Affair

Melford is welcoming IVY & BOND, a new tearoom in Waterloo House next door to the Little Nook in Hall Street. It's a new venture for the owner, Helen Clutterham. After the loss of her beloved husband, Paul, to cancer in August last year, she knew that she and her three daughters, (Megan 20, Eliza 17 and Hermione 11), needed to take on a new challenge and look to the future. Ivy & Bond was created from that resolve and an exciting new family business was born.



Helen Clutterham's
IVY & BOND tea shop
opened on 3rd January

Helen says, "We hope to bring you much joy when you visit us at our new tearoom with excellent friendly service and delicious food." The menu offers a selection of cakes and light lunches, traditional afternoon tea, as well as takeaway options. It's also possible to arrange celebrations there for special occasions and make those family times extra special. Birthdays, baby showers, anniversaries or a lovely get together with friends can all be accommodated. There's even a charming courtyard garden.

Helen adds, "We are extremely grateful to our family and friends for their continued love and support. The

girls and I are looking forward to meeting you all in 2023 and being part of the Long Melford community." Follow them on Facebook @IVY&BONDtearoom

Coming shortly

We found that there were too many great new business ventures in the village to do justice to them all in one issue, so we'll be exploring more new business initiatives in future issues. If you're involved in a new business in Melford we'd love to hear from you. Please email melfordmatterseditor@gmail.com



Edward Charles Interiors is a family upholstery business and has had a showroom in Ringers Yard, Long Melford for 7 years. The business has been established since 1971 with a workshop in Essex.

www.edwardcharlesinteriors.co.uk
01787 377705
edwardcharlesinteriors@btconnect.com

**EDWARD
CHARLES
INTERIORS**

*Bespoke
Handmade
Furniture*

We make bespoke handmade upholstered furniture such as made to measure sofas and chairs, as well as headboards, ottomans etc.

We also offer a full reupholstery service including furniture in the home, as well as pubs, hotels and also vintage cars, boats, horseboxes and caravans.



Lambing at Kentwell Hall

Kentwell Hall's Lambs Will Put A Spring In Your Step

This was written in December's deep freeze and with snow on the ground. But thoughts will soon turn to warmer times and the attractions of spring.

Kentwell Hall is renowned for 500 years of fascinating history. But it's also well known for being home to a resident flock of Norfolk Horn sheep. The lambing season throughout March and April is a major attraction and previous years have seen more than 150 lambs born.

From February visitors can enjoy the beautiful snowdrop walk and extensive drifts of daffodils which flower into late April and early May.

All this and the chance to explore and enjoy the wonderful grounds and much-loved family home makes Kentwell a stunning spring day out for all the family.

Kentwell's grounds will be open every weekend during March. The house and gardens also open daily for the duration of the Easter Holidays, from 1st to 16th April, with extra festivities planned over the Easter weekend.

Find out more by visiting www.kentwell.co.uk, phoning 01787 310207 or emailing enquiries@kentwell.co.uk.



Scutchers

LONG MELFORD

**Celebrating 30 years
(And still going strong)**

Thanks to everyone for their amazing support!



www.scutchers.com

Opening times

Thursday, Friday and Saturday
12noon to 2pm (last orders)
6.30pm to 9pm (last orders)

Westgate St
Long Melford
Tel: 01787 310200

Festive Long Melford



A Snowman and Elf 'Ding Dong Merrily' outside Mansell Hall

Fun and Fund Raising

As well as being a fun weekend, over £5,000 was raised for good causes during last November's Festive Long Melford weekend.

- The Friends of Long Melford Primary School (FLUMPS) raised almost £1,000 for the school (see below)
- The Friends of Long Melford Library raised £860 at their Christmas Fair
 - Sales of food, mulled wine and raffle tickets at



The day's events concluded with Carols around the Christmas Tree



Long Melford Church of England Primary School



A School Report on the Christmas Market

You may remember that at the end of November, pre-the big December freeze, our Christmas Market was held at the school – the launch event of the Festive Long Melford Weekend!

Our children had been working hard on their Enterprise Projects to design and make items to sell on their market



A special Black Friday deal was on offer

stalls. There were cakes, cookies, bookmarks, Christmas Tree decorations, 'stained glass windows' to stick on your windows, tickets to watch the World Cup football match as well as several festive games. Even our younger children joined in the fun with Christmas games.

The day of the Christmas Market was Black Friday and some of our Year 6 children entered into the spirit by offering a Black Friday discount on their cookies. Altogether, our children made over £400 profit from their stalls which was amazing. The winning class was Rosa Parks Class (Year 5).

A huge thank you goes to FLUMPS who worked extremely hard to put together the Christmas Market – they raised almost £1,000 for the school funds. Thanks also to the outside stall holders and Beau and Arrow Events who supplied elves and entered into the Christmas spirit by singing carols.

The star of our Christmas Market was, of course, Father Christmas who arrived in his grotto by magic and then talked to lots of children about what they wanted for Christmas!



Board game fun at the fair

Mansell Hall raised £2,500 for the Church stained glass window restoration fund

- Messy Church in what used to be Gigi's raised around £140 for the Church
- The Heritage Centre made £350 selling mince pies, mulled wine and books about Melford.
- The organ grinder raised just under £100 that he donated to Project Seven
- Melford Events Group donated £100 to Project Seven

Thanks very much to everyone involved in making it such a great weekend. Thanks also to the Parish Council, the Village Hall and Pat Davey for funding the entertainment laid on.

We hope you enjoy these photos of the event.



The Silver Band entertained the passing shoppers



Santa's reindeer took a break from delivering presents

On behalf of FLUMPS and the school, a huge 'thank you' to everyone who came to our Christmas Market and supported FLUMPS and our children with their amazing enterprise projects.

The next event for FLUMPS will be a **Quiz Night** on **Saturday 18th March** at the football club. Everyone is welcome to attend. So, please look out for the posters appearing in the village.

Amanda Woolmer, Headteacher



Santa was the star attraction



East Anglia's largest Antiques & Retail Emporium
 60+ dealers ~ 16,000 sq.ft ~ 4 floors
 Mon - Sat 10.00am to 5.00pm, Sun 11.00am to 4.00pm
 The Old Maltings, Hall Street, Long Melford, CO10 9JA
 Tel: 01787 323626 www.melfordantiquesandinteriors.co.uk



Tea, coffee, fine home-made scones, cakes and other delights (closed Tues)



Regular on-line auctions with personal viewing beforehand

* Prestige Awards/Corporate Livewire 2022

Handmade Rugs Runners & Large Carpets

*Experts in Restoration
& Cleaning*

www.rugandcarpetstudio.co.uk

THE
RUG
&
CARPET
STUDIO

The Old White Hart,
Long Melford, Sudbury
Suffolk CO10 9HX

Open Monday to Saturday
10:00am – 5:30pm

01787 882214

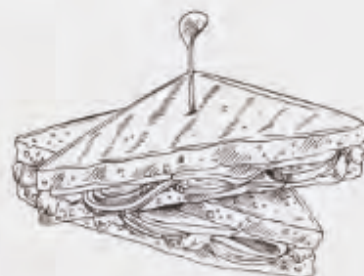
Order Online
Free Delivery



What is your reason for visiting the Swan?



*Sunday Lunch
Drinks with friends
Special Occasions
Spend time with us!*



The Swan, Long Melford

HALL STREET, LONG MELFORD, SUDBURY. CO10 9JQ
01787 468653

Good News from the GP Practice

Scott Hanson took over as the practice manager for the Long Melford and Lavenham surgeries in October last year.

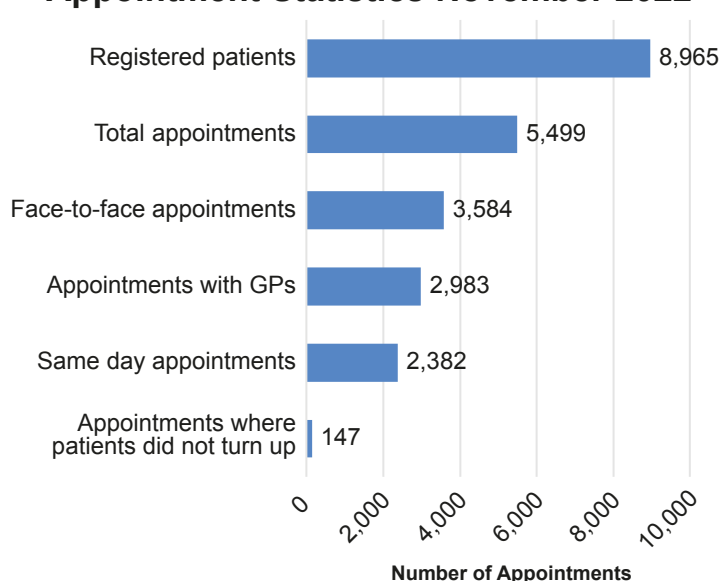
Since then, significant improvements have been made. Scott reports:

Extra GPs, nurses and receptionists

We've taken on two new full-time GPs, which means over 200 more appointments a week. We've also employed a new full-time nurse, a health care assistant and a nurse (working two days a week) who specialises in asthma, diabetes and other long-term conditions. In addition, we have a new dispensary manager and a new receptionist (who applied after seeing vacancies mentioned in the last issue of Melford Matters). We are continuing to recruit reception staff.



Appointment Statistics November 2022



Easier to book appointments

Until late last year we could offer only same day appointments with GPs but we're now back to offering advance booking for GP and nurse appointments (both face-to-face and telephone). If a follow-up consultation is needed, it will be booked there and then rather than patients having to phone the surgery again.

Even before the new booking system was in place, we were supplying an increased number of appointments. November's figures are in the bar chart. You'll see, for example, that the total appointments given in the month was almost 5,500.

These figures, which already match pre-pandemic levels, will increase because of our additional staff.

A new phone system on its way

Many of you will be aware of the difficulties getting through to the surgery on the phone. I hope you'll be pleased to hear that we're installing a new state-of-the-art phone system which is used in many other GP practices and hope you'll notice the improvement as soon as it's in place (hopefully by mid-February at the latest).

Getting out of 'special measures'

Our practice was rated as 'inadequate' and put in 'special measures' by the Care Quality Commission (CQC) last July. My priority at present is to return the practice to a CQC rating of 'good'.

I'm continuing to gather the necessary evidence to show the CQC that the practice has improved and is delivering good clinical care across all areas. The next CQC inspection will be in late January (after this magazine went to press).

If you'd like to contact me

I value comments from patients and if anyone would like to see me, please contact the surgery and make an appointment. Because of the availability of office space, most of my time is spent at the Lavenham surgery but I'm in Melford every Wednesday. Alternatively, please email me with any comments at scott.hanson@nhs.net.

The Patient Participation Group Response



Anne Hinds, chair of the PPG, says "We are working closely with the surgery and are absolutely delighted with the progress made since Scott's appointment. We welcome the spirit of openness and co-operation that is now part of the ethos of the practice."

Parish Council Matters

Parish Council budget

At its January meeting the Parish Council (PC) agreed its Budget for 2023/24. Last year it decided there would be no increase at all in the amount that Melford households would pay for the PC. This year, the increase for a typical household will be just under 7% – which is less than the general rate of UK inflation. The new figure is less than £2 a week per household.

New Councillor and forthcoming elections

The PC has co-opted David Burch until the next elections on 4th May. David has previous experience on the PC and has recently retired as Director of Policy at Essex Chambers of Commerce.

If you'd like to stand in the May election, the Electoral Commission has information about how to do so on its website <https://www.electoralcommission.org.uk/i-am-a/candidate-or-agent/parish-council-elections-england>

You'll need to download and complete nomination forms and send them to Babergh between 16th March and 4pm on Tuesday 4th April. When we went to press, Babergh was still updating its election pages.

Annual Parish Meeting

This will be held in March – date and venue to be announced (please keep an eye on noticeboards and www.longmelford-pc.gov.uk). It's not a PC meeting. But it's your chance to hear what it and various village organisations have been up to in the last year –

and you can have your say. Refreshments will be served after the meeting.

Astronomic cost of new pedestrian crossings

The PC has been trying to get Suffolk Highways to install two new pedestrian crossings – one between the Bull and the existing traffic light crossing, the other near the new 'Skylarks' development. So far, no luck – with SCC seemingly unwilling to provide either. And the 'ballpark' costs quoted have been astronomic – £3,000 to £4,000 for a feasibility study and up to £100,000 for a traffic light-controlled crossing. The PC is asking for cheaper options. But anything SCC Highways does comes at a price – they charge around £500 'administration fee' for most projects, in addition to materials and installation costs.

The Upper Green

As reported in previous issues of Melford Matters, the PC worked with the Church and Melford Estates to prevent damage to the Upper Green when the ground was soft. Gates were installed to allow access when conditions were firm but to prevent it, in most cases, when the ground was too soft.

The PC states "In early December 2022, Melford Estates informed the PC that, as the landowner, it would be wholly their decision when the gates would be opened and closed." For the full statement from the PC, see www.longmelford-pc.gov.uk.

Jayne Lines

Very sadly, Jayne Lines passed away just after Christmas. Her funeral will be at Holy Trinity on Wednesday 1st February at 11.30am. Jayne served on the Parish Council for many years, including a spell as Chair. She also did many other things for Melford; most recently she was a founder of the Covid Support Group, formed to help residents cope during the first lockdown. In March last year, she received a Civic Award from the PC for making an exceptional contribution to the Long Melford Community. And in May, she was the 'local hero' nominated to carry the Queen's Jubilee torch through Melford as part of a Suffolk-wide 'Torch Relay'.



Parish Council Matters

Fly-tipping is illegal

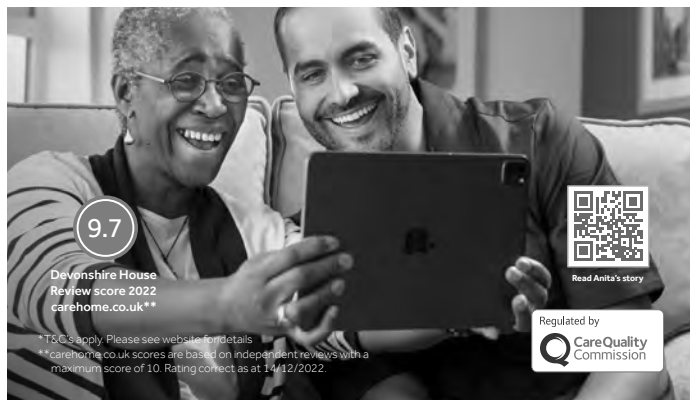
And it's punishable by a fixed penalty fine of up to £400 or, if taken to court, a fine of up to £50,000 or 12 months in prison. Thankfully, we haven't yet had anything in Melford that warrants the maximum sentence. But we have had instances which spoil our beautiful village. In Liston Lane, for example, someone has been dumping garden waste on the green verge, which is fly-tipping – if you can't compost it, please take it to the Sudbury recycling centre or get a brown bin from Babergh. When the recycling containers in the Old School car park are full, please don't leave your waste on the ground next to them – this is also fly-tipping. Please respect our village and dispose of your waste in the correct manner.



Leaving bottles on the ground when the recycling containers are full is fly-tipping

Cordell Place play area on hold for now

What a saga. In brief, the PC wanted to install new toddler play equipment in the play area and has set aside the money to fund it. But the play area is owned by Babergh, who said that if the installation were to happen, the PC would have to take over responsibility for all the play area and equipment. It's estimated that to bring the current equipment and surfacing up to scratch would cost around £130,000. The PC asked Babergh to complete the works before taking it over but Babergh doesn't seem willing to do that and has offered a mere £30,000 towards the costs. So, for now, we're at an impasse.



**TRUST US
TO HELP
MARCELLA
STAY IN TOUCH**

We know who is close to Marcella's heart



Who Cares? We do, and we always will

3 weeks for 2 on a respite stay*

Devonshire House care home, High Street, Cavendish, Sudbury, Suffolk, CO10 8AS
Call 01785 40181 Visit [anchor.org.uk/DevonshireHouse](https://www.anchor.org.uk/DevonshireHouse)

Image does not represent face mask guidance followed in our locations

The Long Melford Tea Room



A wide selection of loose leaf teas

Homemade Cakes and Scones

Light Lunches

Traditional Afternoon Tea (*pre-book only*)

***The small Tearoom with a big Welcome.
We look forward to seeing you.***

Open 10-5pm

Closed Tuesdays and Sundays

1 Dudley House, Hall Street

01787 881361

Heritage Matters

Bombs Away in Melford

Hundreds of people were left bitterly disappointed when last November's Big Night Out had to be cancelled thanks to the discovery of three unexploded mortar bombs. However, that wasn't the first time that unexploded bombs made the news in Melford. The cutting on the right (from the September 2000 issue of the Long Melford Historical & Archaeological Society newsletter) reports that such a discovery could have been catastrophic nearly 80 years ago.



The Old School could have been blown up by three pupils in 1943
Photo: Steve Thomson

A Bomb in Melford School - 1943

Ian Sandham

(Facts supplied by Arthur Kemp)

In the summer of 1943 Long Melford's entire village police force, Sgt Bugg and PCs Sale and Bowers, visited the village school to warn pupils of the dangers of unexploded bombs and anti-personnel devices several of which had been found in the Kentwell area. The children were told forcefully not to handle them.

But boys will be boys! And so, after school, John Perkins, Freddie 'Drummer' Hurrell and Arthur Kemp, inspired by the talk, decided to hunt for bombs, etc. Their luck was in when they found fins sticking out of the ground. Using a piece of rusty angle iron they dug out a bomb weighing about 80 lbs and carried it from Kentwell down to the school - the Headmaster, Mr Chamberlin, was also one of the leading figures in the Home Guard so where better to take an unexploded bomb? The boys' ring on the School House doorbell was answered by Mrs Chamberlin who, on learning what was on her front lawn, collapsed hitting her head on the quarry-tiled floor.

The Bomb Disposal Squad was called in, an area between the Upper Green and The Bull Hotel was cleared of all people, the air raid sirens sounded, a loudspeaker vehicle toured the village telling folk to open all windows and to stay indoors and the bomb was taken to Melford Hall Park where, away from all houses, it was detonated. The explosion shook the whole village.

Army Officers later visited the school to tell of the idiots who put so many people at risk - had one of the boys pressed the button under the tail fin of the bomb this story would not have been told!

Reflections

Comfort from our Ancestors

One of the remarkable things about our church is that it has been here for centuries. The current 'incarnation' of the church at Long Melford was built through the 1400's but there was undoubtedly a church here before then. As well as the regular Sunday services, and services associated with 'hatching, matching, and despatching', the church has also been a place where people have sat alone, thought and prayed.

"How will I be affected? How will my family be affected by ... the Plague ... the Reformation ... the Civil War ... the Enlightenment ... the Industrial Revolution ... the World Wars ..." and so on.



Many are facing this year with a sense of foreboding, and it may be that some things will get harder in the year ahead. You're invited to come and pray alongside our ancestors – during the week when the church is open, or at our services. Many who have gone before us found strength and hope from God during their times of trial, and so can we.

Rev Lawson



Architectural Design & Planning

Local Architectural practice providing a full range of Architectural services including...

- Residential Extensions & Refurbishments
- New Dwellings
- Commercial / Industrial Projects

Free Consultation / Quotation

T : 07974 251150

E : dking482@yahoo.co.uk

W: www.kingarchitectural.co.uk
(Currently under construction)

5 Spicers Lane,
Long Melford,
Sudbury, Suffolk,
CO10 9JJ

Brain Matters



A Saints' Quiz

14th February – St Valentine's Day – gave us the idea of setting a quiz with the questions and answers featuring saints in various forms.

1. Who designed St Paul's Cathedral?
2. In which year was the St Valentine's Day Massacre? Was it 1929, 1939 or 1949?
3. In which Yorkshire town is the St Leger raced?
4. Twins Nicole and Natalie Appleton are members of which girl band?
5. St Bartholomew's is one of London's two oldest hospitals, What is the other one?
6. In which mid-west US state is the city of St Louis?
7. The cartoonist Ronald Searle created some appalling schoolgirls. What was the name of the school they attended?
8. How else is the 'maid of Orleans' known?
9. Which Premier League football club has the nickname of 'the Saints'?
10. Who died in exile on the island of St Helena in 1821?

Answers on page 30.



Nature Matters

Welcoming nature into Long Melford

Climate change is the greatest long-term threat that people and nature face. We are seeing more extreme weather and a general decline in the natural world, with the UK being one of the most nature-depleted countries in the world. Many species are in decline and some face extinction.

Solving this crisis can seem daunting and to some extent relies on national and international governance. But we can all do our bit and so I'd like to urge you to make 2023 the year you take a few steps to help.

Below are nine simple ideas to consider:

- ♣ Switch off lights when you leave a room. It's one of the simplest ways to reduce energy consumption – good for the planet and your wallet!
- ♣ Reuse if you can; if not recycle. In particular try to reduce single use plastics.
- ♣ Walk or cycle if you can rather than use a car.
- ♣ Save water, both in the house and garden. If you don't already have one, get a water butt to collect the rain for watering your plants.
- ♣ Don't waste food. There are numerous ways to use up leftovers if you have them and better still, plan your menus so there isn't anything left over.
- ♣ Grow your own food, or if this isn't possible, try to buy locally grown and seasonal produce.
- ♣ Grow more native and insect-friendly plants and be less tidy in your garden.
- ♣ Help our birds by providing food, water and nest sites.
- ♣ Volunteer to help the Biodiversity Group manage nature in the village.



We will be launching our 2023 'Save our Swifts' campaign in February to encourage more home owners to have swift boxes put up under the eaves. Please come along to the Melford Seed Swap on Saturday 25th February at the Village Hall to learn more about swifts from Simon Hooton, one of the Suffolk Swift Group experts. If you can't get along that morning, please message me to order your box(es). We will again be seeking the support of the Melford Firefighters to help put up the boxes. We can also help with information about making and siting other bird boxes.

Wishing everyone a Happy and Environmentally Friendly 2023.

Jane Burch
jane_burch@yahoo.co.uk



Farm Shop, Cafe & Salon open 6 days a week
Cafe booking recommended
Salon by appointment
Closed Mondays



www.willowtreefarmshop.co.uk 01787 280341

Willow Tree Farm Shop & Cafe | Lower Road | Glemsford | CO10 7QU



Gardening Matters – Notes from the potting shed



Roll Up, Roll Up for the Big Seed Swap

We're delighted to confirm that the seed swap is back on **Saturday 25th February 10am-12noon** in the **Village Hall**. This year there'll be representatives of Melford in Bloom, the Biodiversity Group and the organisers of Open Gardens available to chat with about their various projects and activities in the village. Simon Hooton from Suffolk Bird Group will also be there to explain how to make swifts even more welcome in Melford – see opposite for more details.

The seed swap is a lovely opportunity to catch up with fellow local gardeners or just come in for a cuppa. We also have our first ever gardening themed tombola, not to be missed! Remember, you don't need to have saved or spare seeds to join in, just help yourself to whatever you fancy from our huge selection and make a small donation. We have an extensive choice of herb seeds, practically every type of vegetable seed you can think of, as well as an enormous range of ornamentals, including poppies, evening primrose, sunflowers, cornflowers, calendula, gaillardia, agapanthus, sweet rocket, asters, night scented stock, sweet peas and eryngium.

Be Kind to Bees

As a Melford gardening project for 2023, how about all of us growing something specially designed to attract pollinators, whether it's one we have grown before or a new venture? Most of the list above would appeal to any bee and plants like eryngiums are even drought tolerant in case we have another tricky dry spell to contend with. Their beautiful mauve thistle shaped blooms are long lasting and absolutely irresistible to bees, providing multiple sources of nectar from each flower spike. Evening primrose is also simple to grow, keen to self-seed and attracts hawkmoths as well as bees, so you could be doing Melford's biodiversity a good turn by choosing that as something you find space for in 2023.

Jobs to do now

If you're itching to get started with gardening now, don't forget to cover your rhubarb with an upturned bucket or large pot to encourage early tender shoots. It's also worth getting your aubergine and any pepper seeds on the go as they need a long growing season if their fruit is to mature during the hotter months.

Meanwhile, let's hope for a wonderful display of spring bulbs, promising another great year of colour and beauty in our lovely village.

Please keep sending your queries and tips in to Melfordmatterslifestyle@gmail.com

Happy Gardening!

Long Melford Village Memorial Hall

Situated in our beautiful village, the hall is the perfect venue for your event, however large or small. It offers a large function room with a stage area and a fully equipped kitchen. Tables and chairs are available free of charge if you need them and there is a large car park for the use of your guests. Whether your event is a family party, a wedding reception, a fundraising evening, an exercise class, a regular community event or a simple meeting we are sure the Memorial Hall will suit your needs.

	Monday - Thursday	Friday - Sunday
Commercial rate	£16 per hour	£19 per hour
Standard rate	£13 per hour	£16 per hour
Melford resident rate	£10 per hour	£13 per hour
Audio visual equipment available @ £25 per session		

To book Long Melford Village Memorial Hall for your event visit our website
<https://www.longmelfordvillagehall.co.uk/how-to-book/>
or call 07379 894325

NEED A PLUMBER?



A P PLUMBING

Professional service with
over 40 years' experience

All plumbing work
undertaken

Suffolk and all surrounding
areas

Free estimates - call today

01787 282826 07940 516199

poultonplumbing123@gmail.com

3, The Old Orchard, Glemsford,
Sudbury, CO10 7SX



Spitfire Mowers

Sales – Service – Repairs

ASPEN – long-life fuel for small
engines

From strimmers to chainsaws,
hedge-cutters to mowers,
industrial to domestic, we
have it covered.

We have access to 1000s of parts.

www.spitfiremowers.co.uk

Find us at Unit 4B Clockhouse Farm,
Cavendish Lane,
Glemsford, CO10 7PZ
Phone us on 01787 736618



Chiropodist

Established & locally based (Alpheton)

- Quality foot care
- Caring service tailored to your individual needs
- Expert advice
- Experienced with additional nursing qualification

*If you are unsure as to whether chiropody is
for you, please do not hesitate to contact me.*

Elizabeth Gibson MSSCh MBChA
Health & Care Professions Council Registered
• Reg. No. CH20192



CLINIC

The Beauty Cave

Little St Mary's

Long Melford, CO10 9HY

M: 07798 806184

HOME VISITING PRACTICE

Long Melford & surrounding villages.

T: 01284 827380

Youth Matters

Scouts Give Their Time for The Village

The Melford Scouts had a fantastic turn-out for Remembrance Sunday. It was the first time that the Squirrels, aged four to six, joined the procession from Melford Hall to Holy Trinity. The 15 Squirrels paraded along with 28 Beavers and 18 Cubs. Together with the senior Scouts and leaders, they numbered over 70.

For Christmas, the Beavers and Cubs made and painted clay Christmas decorations and made Christmas cards and a 3D Robin. The Squirrels visited Steeds Meadow

and sang Christmas Carols and carried out craft work. They also gave homemade Christmas cards to the residents. The visit was very well received and earned the Squirrels a mention on Suffolk Radio.

Can The Village Give Time for The Scouts?

Carolyn Spraggons is Melford's Beaver Scout Leader and has a number of other scouting roles. She told us, "Thankfully, we have parent helpers but right now, our priority is to encourage more people to train as leaders. We have 35 children on our waiting list but have had to close it because we need leaders. I hope we don't follow Lavenham where the whole scouting group has closed. Please help us prevent that by stepping forward. We have a four-week challenge: you can visit and help us to see if you'd like to train as a leader. If you're interested, please email melfordgsl@aol.com"



The Scouts gather for the Remembrance Day Parade

Santa At Scouts' HQ

Santa visited the Squirrels who received a bell from The Polar Express story and a Squirrel trinket/bracelet. Santa also visited the Beavers who were given sweet/badge presents. Santa's visit to the Beavers had a pirate theme and they played a rescue game. The Squirrels and the Beavers enjoyed playing Christmas games and stacking presents.



"Ahoy there!" from Pirate Beavers Freddie Savage and Jasmine Coxhill

yes you can
with Slimming World

Monday 5.30 & 7.00pm
For further information
contact:
Sam 07377 738 813

slimmingworld.co.uk
#YesYouCanWithSlimmingWorld

Slimming World
touching hearts, changing lives

50 DISHES • AWARD WINNING • CHILDREN EAT FREE • 100% FRESH LOCAL BRITISH MEAT • GLUTEN FREE NANS

The Melford Valley
Sunday Buffet
12pm - 4pm
£9.95

The Melford Valley, Half Street, Long Melford, Suffolk CO10 9JT
01787 311518 / 310079
www.melfordvalley.com

100% NUT FREE • DAIRY FREE • VEGAN • 50 DISHES

50 DISHES • AWARD WINNING • CHILDREN EAT FREE •

**HELPING LADIES
BE THE BEST THEY CAN BE SINCE 2003!**

**GIVE YOURSELF
THE GIFT OF...**

**BETTER
HEALTH
&
THE FIGURE YOU
DESERVE!**

**JOIN NOW &
PAY NOTHING
UNTIL
FEBRUARY
2023!**

**WHATEVER
YOUR GOALS
WE ARE HERE
TO HELP!**

**LADIES
ONLY**

**GYMOPHOBICS
250,000 WOMEN CAN'T BE WRONG!**

WEIGHT LOSS
Ladies love excess weight following our low sugar diet and unique Resisted Tension programme that makes exercise easier than you ever thought possible.

INCH LOSS
Unlike conventional gyms, the Gymophobics programme is focused on very fast figure improvements.
Most ladies lose a dress size in the first few weeks and inch loss is targeted at all the right places.

TONING & FIRMING
Your muscles will become toned and your body will become leaner and firmer. Your tummy will be flattened, your bust lifted and cellulite areas eliminated. As circulation improves, cellulite deposits will reduce.

CONFIDENCE & SELF ESTEEM
Knowing you look well fed goes a long way to give you a positive mental attitude to live life to the full.

FITNESS & ENERGY
Your energy levels will multiply as more oxygen reaches the muscles. Most people find that within a few weeks of starting they are sleeping better and their fitness levels have increased significantly.

HEALTH BENEFITS
Studies show that the risk of heart disease, stroke, thrombosis, diabetes and obesity can be reduced by a third if you exercise for just 10 minutes on a regular basis.

01787 827030 sudbury@gymophobics.co.uk

31 Market Hill, 1st & 2nd Floor, Sudbury, Suffolk, CO10 2EN

**SUDBURY
Gymophobics**



**WATSONS
PLANTS**

Watsons Plants is bursting with a beautiful array of perennial plants. The quality of our plants is second to none and we are confident they will be thriving in your garden for years to come. We have a substantial choice of quality shrubs and garden plants at hugely competitive prices. For the discerning gardener or enthusiastic beginner, we have something for everyone.

Louise Watson 07952 638016
Chris Watson 07941 640560

**Watsons Plants Ltd, Bury Road
Depden, Bury St Edmunds
Suffolk, IP29 4BU**
enquiries@watsonsplants.co.uk
watsonsplants.co.uk



 **LIFECHECK**

THERAPY COACHING TRAINING SELF

**Katrina Love BSc(Hon)
Psychotherapeutic
Counselling**

**Qualified Trauma Therapist
and Mindset Coach**

**is now practising from
Long Melford**

07747 345384

WWW.LIFECHECK.LOVE

Sport Matters

Melford has a World Cup Winner

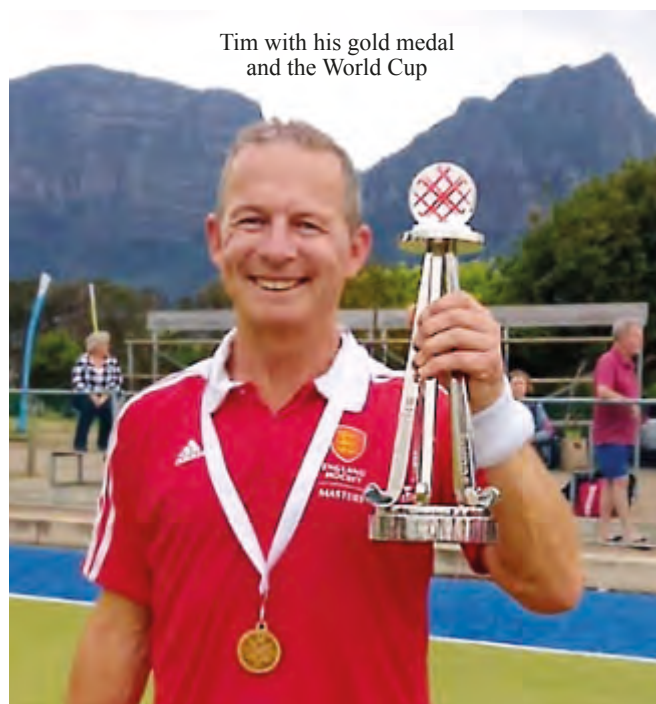
Melford resident Tim Blackburn was a gold medal winner in the World Hockey Masters World Cup in Cape Town, South Africa in October 2022.

He was in the England Over 55s team that played 6 matches in 9 days. In the round-robin league format, England won all four matches easily (including beating USA 10-0).

Tim says "The semi-final was a 2-0 victory over a resolute Ireland side before we beat South Africa 6-4 in an action-packed final."

All matches were streamed live on YouTube – the final can be seen at <https://www.youtube.com/watch?v=zIgsrCEJ60g> (Tim is number 6).

Tim first played for England 11 years ago and now has a total of 21 England Hockey international appearances.



Tim with his gold medal and the World Cup

Mid-Season Report from the Football Club

Halfway through the season, the First Team were 8th in the Thurlow Nunn Premier Division with 28 points. David Hennessey's team have already won 8 matches, a huge improvement compared to only 6 victories during in the whole of last season.



The Reserves were 5th in their League with 16 points. Their last match before Christmas ended in a convincing 3-0 win for Darren Thomas's side away to Framlingham Town.

The Under 18s were 7th in the Youth League with 12 points. Nathan Bartlett's young team achieved an excellent result in their last match of 2022, winning 6-2 at league leaders Holland.

All three teams can be very pleased with their performance so far. Fingers crossed for more of the same in the second half of the season! Keep in touch via the club website www.longmelfordfc.com

Cricketers Wanted

Are you looking for a new cricket club? Used to play and want to get back into it? Never picked up a bat before?

There's an open invitation to everyone to come along and get involved with Long Melford Cricket Club. We're recruiting new players of all abilities to play for our two Saturday and two Sunday teams for the 2023 season.

Why not come along to our winter nets, held every Sunday until 26th March, 3.30pm to 5pm at Great Cornard Leisure Centre? It's a perfect chance to find out more about our club whilst honing your skills with tuition from a qualified coach. The first session is free for all new attendees; £5 a time after that.

Please email us at chairmanlmcc@outlook.com, phone Matt Hoadley on 07825 330206 or contact us through social media.



Directory of Clubs and Societies

Group	Contact	Phone/email
Beading (Suffex Bead Club)	Victoria Power	07866 996124
Beaver Scouts	Carolyn Spraggons	carolyn.spraggons@suffolkscouts.org.uk
Chadbrook Guides	Rebecca Cox	chadbrookguides@gmail.com
Coffee & Cake @ St Catherine's	Margaret Taylor	01787 880875
Connect Toddler Group	Pam Tonks	07890 880976
Cricket Club	Ivan Newman	07944 893167
Explorers	Thomas Tracey	bovineesu123@gmail.com
Folk & Acoustic Club	Pauline O'Brien	poboap123@gmail.com
Football Club	Richard Kemp	01787 378149
Friends of LM Church Building Fund	Richard Michette	01787 377164
Friends of Long Melford Library		help@suffolklibraries.co.uk
Good Neighbours' Scheme	Helen Eaton	07504 249179
Historical and Archaeological Society	Ian Sandham	07586 354414
Holy Trinity & St Catherine's Church	Rev. Matthew Lawson	01787 310845
Keep Fit	Heather Mahony	01449 736662
Long Melford Community Sports Trust	Peter Turner	01787 468536
Long Melford Cub Scouts	Jon Spraggons	longmelfordcubs@aol.com
Long Melford Group Scout Leader	Stephen Spraggons	melfordgsl@aol.com
Long Melford Museum and Heritage Centre	John Nunn	01787 313496
Long Melford Litter Pickers	Gerald Lees	01787 373273
Long Melford Open Spaces	Graham Eade	01787 319120
Long Melford Photographic Group	Derek Challis	01787 373738
Long Melford CE Primary School	Mrs Woolmer	01787 379929
Long Melford Scouts	Graham Souch	1stlmscouts@gmail.com
Long Melford Squirrel Scouts	Carlene Hare	carlene.hare@suffolkscouts.org.uk
Long Melford Walking Group	Mike Turner	07733 102229
Long Melford Women's Institute	Jane Ebejer	01787 375862
Melford Music	John Watts	01787 310373
Neighbourhood Watch	Stuart Finch	07867 371564
Over Sixties Club	Mrs Albon & Mrs Woodgate	371413/376711
Old School bookings	Rosey Eade	01787 319120
Project Seven	Andrew Hagger	07980 526067
Royal British Legion	John Nunn	nunnjohn@btinternet.com
Scout & Guide HQ bookings	Vicki Ramdhanie	lmsglettings@gmail.com
Silver Band	Mike Murkin	01787 312605
The Arts Society Stour Valley	John Ashton	07899 872222
Upbeat Heart Support	Hilary Neeves	01359 232678
Village Hall bookings	lettings.longmelfordvillagehall@hotmail.com	07379 894325

Please notify us of any additions or changes by emailing MelfordMattersAdvertising@gmail.com. Amendments must be received by **1st March** to be included in Issue 13 – April/May.

Quiz Answers

- | | | |
|-------------------------|-------------------|------------------------|
| 1. Sir Christopher Wren | 5. St Thomas's | 9. Southampton |
| 2. 1929 | 6. Missouri | 10. Napoleon Bonaparte |
| 3. Doncaster | 7. St Trinian's | |
| 4. All Saints | 8. St Joan of Arc | |

Visit
KENTWELL

Tudor manor house and country garden

LONG MELFORD CO10 9BA



*Snowdrop
walks*

11TH - 19TH FEBRUARY



DAY VISITS



EDUCATION



Lambing &
Spring bulbs

DURING MARCH



WEDDINGS



CORPORATE EVENTS

What's on at
Kentwell?

TICKETS & INFORMATION

www.kentwell.co.uk

Become a Kentwell
member →



indigo
ross

Spectrum House
Woodhall Business Park
Sudbury Suffolk CO10 1WH

01787 880 260
hello@indigoross.co.uk

indigoross.co.uk

Find us on:



design



print



web

THE GEORGE & DRAGON



Hotel

15 stylish and comfortable bedrooms, all with TV and tea/coffee making facilities

Wheelchair access throughout

Disabled help paging system

Free wireless internet access

Weddings

Approved marriage and civil partnership venue

Large gardens ideal for photographs and welcome drinks

Beautiful marquee with seating for up to 120 guests

Bespoke menus designed to your taste and budget

Buffet or full table service

Evening reception for up to 250 guests

Preferential rates for accommodation

Events

Private rooms for 30 to 90 guests, ideal for birthdays, engagements, anniversaries, wakes and other events or business meetings

Restaurant and Bar

Freshly cooked food

Sunday carvery

Bar meals



Join our local free loyalty club and get up to 25% off your food and drinks.

Hall Street, Long Melford, CO10 9JA

www.thegeorgeanddragonhotel.com

Telephone: 01787 371285

The George and Dragon Hotel



RECOMMENDED
BY RESTAURANT GUILD
2019



Another reason
to choose us.