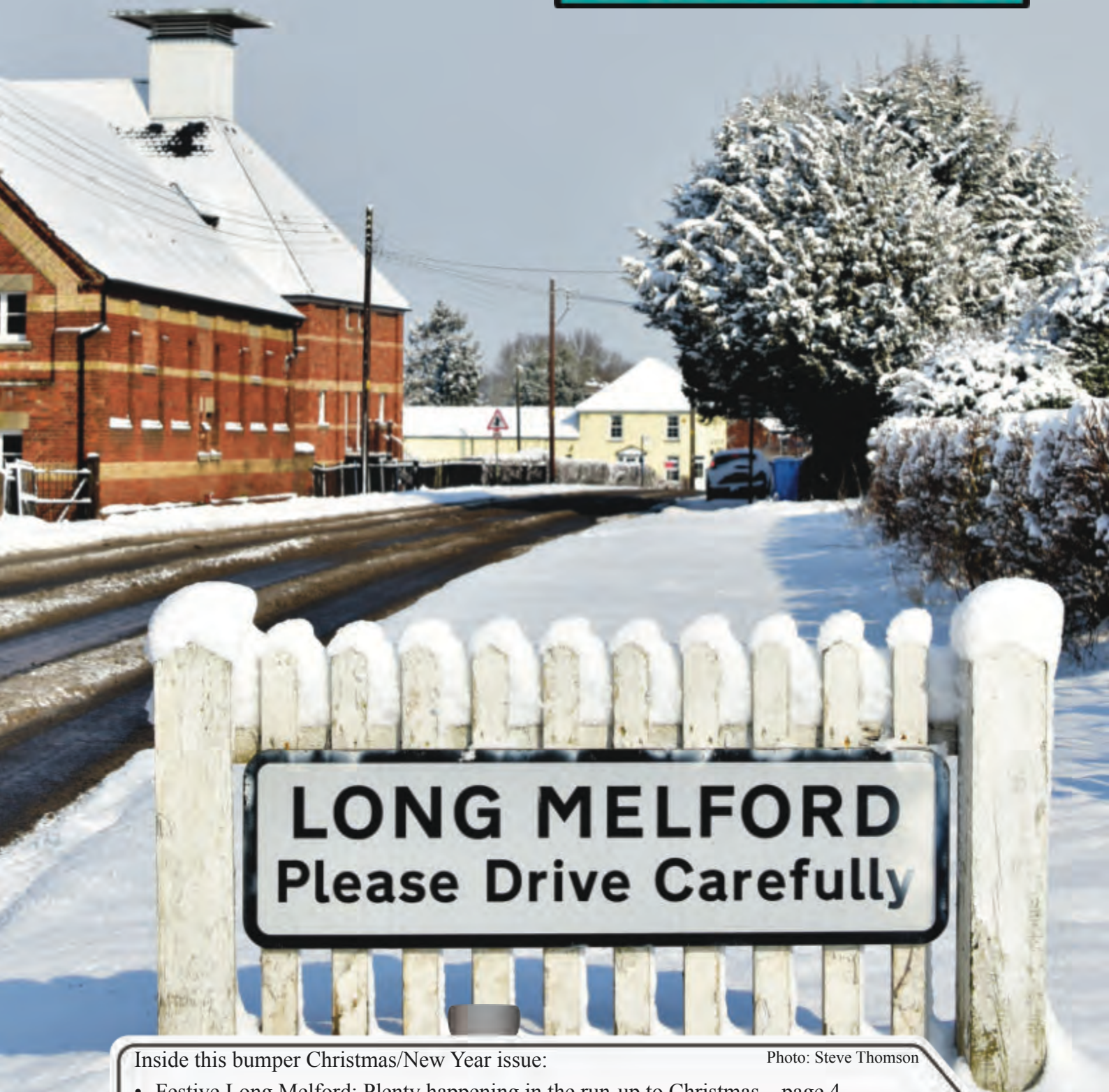


MELFORD

Issue 5 – Dec. 2021/Jan. 2022

Matters



Inside this bumper Christmas/New Year issue:

Photo: Steve Thomson

- Festive Long Melford: Plenty happening in the run-up to Christmas – page 4
- Dear Santa: What community groups wish for in 2022 – page 9
- 2022: Major events to look forward to – page 12
- Beavers Everywhere: reading books, planting bulbs, picking litter – pages 8, 21, 23
- Our Library: Its Future – page 8

info@bespokeblindslm.co.uk



Tel: 01787 371387

BESPOKE BLINDS AND CURTAINS

— LONG MELFORD —



Made to Measure Blinds & Curtains

RollerBlinds | VerticalBlinds | VenetianBlinds | RomanBlinds | PleatedBlinds
Shutters | Curtains | Poles&Tracks | Accessories

Why Choose Bespoke Blinds

We offer a full and bespoke service
No obligation measuring and home
consultation
Professional fitting service

Extensive range of curtain and blind samples
Excellent customer service
Child safety compliance to current safety laws
BBSA Members

www.bespokeblindslm.co.uk

Bespoke Blinds & Curtains
1 Brinkleys, Hall Street, Long Melford, Sudbury, Suffolk, CO10 9JR



ROBINS ROW

Insurance Brokers Since 1867

AN INDIVIDUAL SERVICE FOR ALL YOUR COMMERCIAL AND PERSONAL INSURANCE

**SPECIALISING IN MID TO HIGH VALUE HOMES,
COUNTRY HOUSES AND LISTED PROPERTIES
AND ALL COMMERCIAL INSURANCE SOLUTIONS**

TEL: (01787) 378205

EMAIL: ADMIN@ROBINSROW.COM

HALL STREET, LONG MELFORD, SUDBURY CO10 9JB

AUTHORISED AND REGULATED BY THE FINANCIAL CONDUCT AUTHORITY

Editorial

The Melford Matters team wishes all our readers a very Merry Christmas and a Happy New Year that will hopefully be much less Covid-affected than the last two years.

This bumper issue has more pages than ever before because there is so much going on in Melford to tell you about. The run-up to Christmas (see page 4) is packed with festive news. And don't miss the 'Letters to Santa' page 9 with community groups' wishes for 2022. Indeed 2022 will, fingers crossed, be a year when major events return to the village after a two year gap and exciting new events start up (see page 12).

If one of your New Year resolutions is to get a little fitter, our feature on 11 of the varied classes and activities available in the village – from Indoor Kurling and Yoga to Bootcamp and Boxercise – is for you (see page 30).



I hope you enjoyed the Women's Cycle Race day in October as much as I did – it was great to see so many people out enjoying the bands, sunshine and carnival style atmosphere. See some photos from the day in the colour section starting on page 17, along with news on when and where to see Santa and wonderful winter photos by local photographers.

Finally, I'd like to remember Roger Kistruck, who passed away in October. He did so much for the village in the time I've lived here. He was instrumental in the Parish Plan of 2006, setting up the Good Neighbours Scheme, masterminding the 2018 Residents Survey for the Neighbourhood Plan, and much, much more. He'll be sadly missed.

Dave Watts, Editor

ALL ASPECTS LANDSCAPING
Fencing ~ Paving ~ Treecare
WWW.ALLASPECTSLANDSCAPING.CO
CALL NOW FOR A FREE NO-OBLIGATION QUOTE
f Follow us on Facebook
We cover all hard and soft landscaping with many years of experience.




**FENCING * DRIVEWAYS * PATHS & PATIOS
BLOCK PAVING * GARDEN GATES & WALLS
TURFING & SEEDING * GARDEN CLEARANCE
DIGGER WORK * KERB STONES
ALL TREE WORK & HEDGE CUTTING
GRASS-CUTTING LARGE/SMALL AREAS**

01284 624089 ~ 07384 351944

Would you like your daily newspaper delivered?

Home news delivery in Long Melford from the Kiosk in Sudbury

☎ **01787 319 498**
✉ **info@localnewsdelivery.co.uk**

Contact us for daily delivery of national and regional newspapers as well as a full range of weekly and monthly magazines

S & K News Limited
The Kiosk
3 Borehamgate
King Street, Sudbury
Suffolk CO10 9EG

Christmas is Coming

Christmas decorations, crackers etc have been on sale since October but with less than a month to go, you may be starting to feel that Christmas really is coming. Melford is certainly in festive mode.

Long Melford Goes Festive On 27th November

On Saturday 27th November (11am-4pm), Long Melford will celebrate its wonderful line-up of independent shops and businesses by hosting 'Festive Long Melford' in Hall Street and Little St Mary's, to kickstart the festive season.



Photo: Show Case Photography

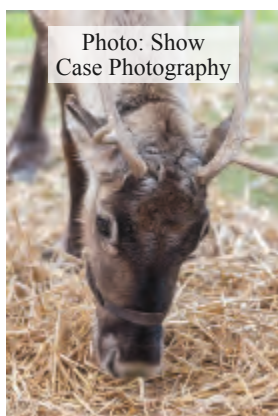


Photo: Show Case Photography

The event is being organised by the Long Melford Business Association alongside a group of business owners and Parish Council representatives, and there are some exciting plans for the day. You'll be able to admire reindeer and a 'live unicorn', listen to the Silver Band, visit Santa's Grotto, and watch Morris Dancing and a Punch & Judy show. There'll be a visit from Lavenham Falconry and its birds of prey. There will also be Messy Church and Face Painting. If that's not enough to tempt you, there'll be swirling snow, and a snow cannon at the Fire Station.



Photo: Show Case Photography



Event Sponsors

Saturday 27th November 2021

Breakout Long Melford	Melford Antiques, Interiors & Lifestyle Centre
Budgens Long Melford	Men's Den
Clark & Son Butchers	Nethergate Brewery
Clothes Lounge	Only Way is Beauty
Dilly Dally	Pat Davey & Brian West
East of England Coop	Pullman Café & Vintage Tea Room
Hall Street	Pure Elements
Indigo Ross	Rug & Carpet Studio
LookinGood	The Black Lion
Long Melford Business Association	The Crown
Long Melford Community Association	The Mill B&B
Long Melford Parish Council	The Swan
Long Melford Post Office	Tiffins Tea & Coffee House
Long Melford Tea Room	Woolpatch
Long Melford Village	
Memorial Hall	

All correct at time of going to print. For more information please visit www.visitlongmelford.co.uk

Our shops will be beautifully decorated and many of them will spill out onto the street to showcase favourite Christmas food and drink offerings. The day will culminate in turning on the lights on the village Christmas Tree on Little Green at 4pm, led by Rev Matthew Lawson with a mixture of corny jokes and traditional carols.

Huge thanks to Amy Hyde Parker for help with the planned layout and parking arrangements.

It would be great to see as many people as possible out enjoying the day and joining in the carols.



Photo: Show Case Photography

Christmas at Kentwell

On the weekends of the 4th/5th and 11th/12th December, Kentwell Hall will be holding Christmas at Kentwell. It features a step back in time to meet Victorian characters such as Cooks in the Great Kitchen, Bakers and Villagers at the Moat House, even



Photo: Gavin Mills

Charles Darwin and Victorian ladies in the Parlour. Plus a Christmas Trail through the gardens and a visit to Father Christmas in his cottage. Advance booking is essential. See www.kentwell.co.uk/events/christmas-at-kentwell

Christmas is Coming

Long Melford Primary School

The School is hoping to put on a Nativity play this year. Last year, each class did something different. For example, the Reception Class performed its own outdoor Nativity play, while Year 3 read Christmas poems. Both were filmed and parents could watch online. This year we hope parents will be able to watch the children perform live.



Raising Money for the School

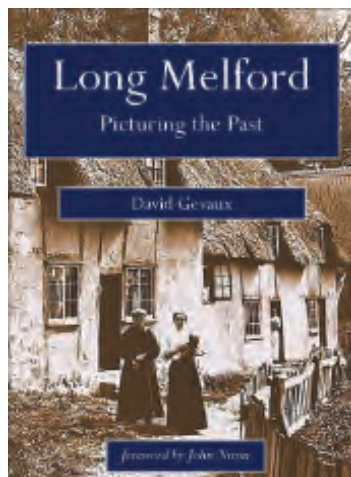
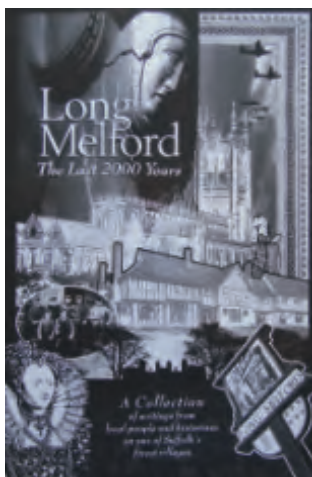
The Friends of Long Melford Primary School (FLUMPS) are holding a Christmas Market at the School on Friday 26th November which will be focusing on the children and their class enterprise. And we plan to take part in Festive Melford on the 27th with our annual Raffle and our Blind Christmas Tombola. We also hope to hold a Christmas Disco for the children.



Christmas Present Ideas with Melford in Mind Two Books on Melford in Olden Times

These two books are available to purchase at Breakout, Little St Mary's, for just £10 each – one raising funds for the Long Melford Museum & Heritage Centre, the other for the Long Melford Historical & Archaeological Society.

'Long Melford Picturing the Past' is a wonderful historical record with over 150 photographs of the village, with many locations still recognisable



today. Written by David Gevaux, this new book, in ten chapters, shows us the many facets of Long Melford's history, from Streets and Byways, through to the Village at Play.

'Long Melford, The Last 2000 Years' is an informative book covering the village history from the Roman Times up to the Second World War, in eighteen chapters written by local and renowned historians.

Melford's Gin

Nethergate Brewery now has a Distillery too. It opened in October and is producing Melford's premium craft gin, made using two quirkily named stills 'Bonnie and Clyde'. Bottles cost £35 for 70cl, £20 for 35cl and would make an ideal Christmas gift for gin lovers.



Long Melford Litter Pickers

We plan to meet up on Thursday 23rd December at 2pm for our last pick of the year, with no doubt a mince pie to get us in the mood for the festivities – the least we deserve after picking goodness-knows-how-many bags of litter following the ending of lockdown.

The Silver Band

As well as playing at Festive Long Melford on 27th November, the Long Melford Silver Band is planning to play carols in Hall Street from 10.30am to 12noon on Saturday 11th December. Its traditional Christmas Concert will be in the Village Hall on Saturday 18th December starting at 7.30pm.



Santa Claus is coming to town

As well as setting up his Grotto on Little Green for Festive Long Melford on 27th November, Santa will also be touring the village on Sunday 19th December - see page 17 for details.

More Christmas events overleaf...

Christmas is Coming

Long Melford Good Neighbours

Come along to our Coffee Mornings and enjoy some refreshments and meet up with others from the village. We will be meeting from 10am to 11.30am at The Old School on the following Thursdays: 9th December, 23rd December (Christmas theme) and 6th and 20th January. Any offers of cake or savouries are always welcomed.

This event is free to attend, but financial donations on the day are gratefully received.

If you're interested in joining our team of volunteers (for driving, phone holder duties, general maintenance support or befriending) or need support from us, please call 07504 249179 and we'll get back to you.

Late Night Shopping

Many of the businesses in Hall Street and Little St Mary's are planning to stay open late on Friday 3rd December from 6pm till 9pm for festive late night shopping, treatments, eating, drinking, etc.

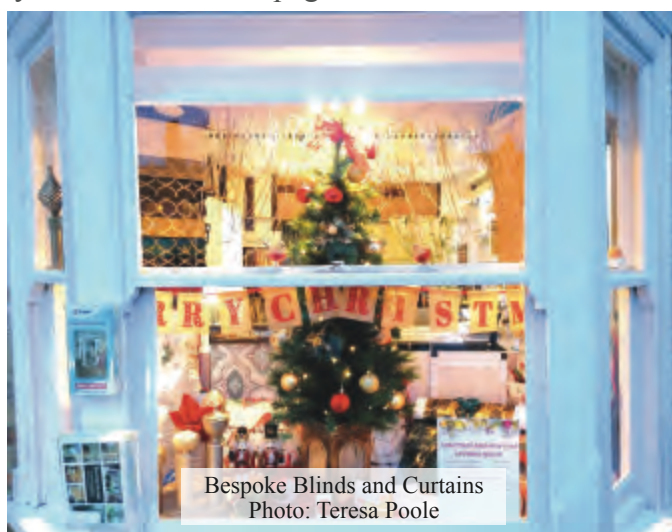


Christmas Window Displays



The Long Melford Tea Room
Photo: Teresa Poole

These are just two of the wonderful window displays created by Melford's businesses last Christmas. We plan to feature the best of this year's in our colour pages of a future issue.



Bespoke Blinds and Curtains
Photo: Teresa Poole

Long Melford Village Memorial Hall

Situated in our beautiful village, the hall is the perfect venue for your event, however large or small. It offers a large function room with a stage area and a fully equipped kitchen. Tables and chairs are available free of charge if you need them and there is a large car park for the use of your guests. Whether your event is a family party, a wedding reception, a fundraising evening, an exercise class, a regular community event or a simple meeting we are sure the Memorial Hall will suit your needs.

	Monday - Thursday	Friday - Sunday
Commercial rate	£16 per hour	£19 per hour
Standard rate	£13 per hour	£16 per hour
Melford resident rate	£10 per hour	£13 per hour

Audio visual equipment available @ £25 per session

To book Long Melford Village Memorial Hall for you event visit our website
<https://www.longmelfordvillagehall.co.uk/how-to-book/>
 or call 07379 894325

Spiritual Matters - CHRISTMAS SERVICES & Church Life

Holy Trinity Long Melford with St Catherine's



Sun 5 th 10.30am	Family Advent Service <i>looking forward to Christmas</i>
Sun 5 th 6.30pm	Traditional Advent Carols <i>choral service with readings and reflections</i>
Sat 11 th 6.30pm	Lights of Remembrance* <i>remembering loved ones, refreshments 6pm</i>
Sun 19 th 6.30pm	Main Carol Service <i>come and sing some well-known carols</i>
Fri 24 th 3.00pm	Crib Service <i>dressing up in nativity costumes optional!</i>
Fri 24 th 10.30pm	Midnight Mass <i>an atmospheric communion service</i>
Sat 25 th 10.30am	Family Communion <i>please bring your presents to show!</i>
Sun 26 th 10.30am	Simple Communion <i>at St Catherine's Church, St Catherine's Rd</i>

* To have a name read out please call 07804 558160 or email chadbrookoffice@gmail.com.

You're welcome to attend regular services at 10.30am every Sunday. Many services are live-streamed (Google "Holy Trinity Long Melford Facebook") ... you don't need a Facebook account to watch. Please see church website for any service changes.

CHURCH LIFE ... *Why not get involved in 2022?*

Choir (Thurs 7.00pm)
nwbrown@gmail.com

Toddler Group (Mon 9.30am)
melfordfamilyworker@gmail.com

Youth Club (Fri 7.30pm, monthly)
melfordfamilyworker@gmail.com

Messy Church (Sun 4pm, monthly)
melfordfamilyworker@gmail.com

Melford Music (Wed Lunch)
www.visitlongmelford.co.uk

Prayer & Study Groups (various)
revmattis@gmail.com

Bell Ringing (Wed 7.00pm)
linda@rodbridge.com

Walking Group (various)
cjsmith18@hotmail.com

Book Group (monthly)
sally@sallybevan.co.uk

Or call 07804 558 160 or see www.longmelfordchurch.com

Reflection: ~~Merry~~ Messy Christmas

Five years ago, my magazine entry started with the words: "Once more as we approach Christmas things feel very unsettled". It seems that this is a true statement every year. This year's concerns include Covid, flu, the supply chain, waiting lists, and not to mention pressure on relationships. Who knows what else may yet transpire...? But even if we don't have all our plastic toys, or if we have to eat a simpler Christmas meal by candlelight, or if we cannot visit relatives ... this might actually help us to engage with the first Christmas.

The first Christmas involved family tension, social shame, poverty, state interference, political mischief, and a dangerous pregnant journey on foot (and donkey!). And yet it was in all this confusion and insecurity that angels celebrated, stars aligned, and a Saviour was born. To quote a carol:

*"The hopes and fears of all the years
are met in Thee tonight."*

So, however messy this Christmas becomes, I encourage you to look beyond the mess and have eyes open to God, it is often in mess that he speaks the loudest.

Rev Lawson



Library Matters

Library Update

Our events will be continuing inside during winter and we'll be following all relevant COVID guidelines to ensure your safety.

- **Wordplay** (Tot Rock and Baby Bounce) Join us every Tuesday at 2.30pm for action songs and rhymes, suitable for children 0-5 years old.
- **Top Time** Our social group meets every Wednesday at 3pm.
- **Family Crafts** Every Saturday from 10am-12 noon we have a new craft for you to try out! Suitable for children aged 3-11.
- **Christmas Fair** The Friends of Long Melford Library would like to invite you to our annual Christmas Fair on 27th November from 10am-1pm. All sale proceeds go to your library.
- **Work Well Suffolk** Join Robyn Cardy for the last of her free drop-in sessions on Wednesday 8th December 10am-12 noon. For those needing support with education, training, employment or wellbeing.

- **Beavers** In October, we visited the Beaver Scouts to help them with their reading badge and got involved with their Promise to the Planet pledge. We were inspired by their enthusiasm and the action they're backing it up with. We had a lot of fun too!



Library Manager Nick Castell helping the Beavers in October

We wish you all a peaceful and enjoyable festive season and a very happy New Year and thank you for your help and support over the last year.

Tel No: 01787 377525

Website: www.suffolklibraries.co.uk

Email: melford.library@suffolklibraries.co.uk

Social media:

www.facebook.com/longmelfordlibrary

Update on the Library's future from Suffolk Libraries

Suffolk Libraries (SL) have been given notice by the owners of the URC that they are terminating the library's lease in March 2022. But there's some good news. SL raised the issue with Cllr Nunn and have subsequently had very positive talks with the Royal British Legion (RBL). SL are 'pleased to confirm it's now very likely that we will be temporarily relocating to their premises at the RBL in March 2022.' SL would like to reassure people that they are committed to maintaining a library in Melford.



Farm Shop, Cafe & Salon open 6 days a week
Cafe booking recommended
Salon by appointment
Closed Mondays



www.willowtreefarmshop.co.uk 01787 280341

Willow Tree Farm Shop & Cafe | Lower Road | Glemsford | CO10 7QU



Letters to Santa

Dear Santa

We asked various village groups and organisations to write to Santa asking him to grant them a wish – not for Christmas Day but for 2022. Thank you to all who wrote to Santa. Sadly, we couldn't include them all but here are some of their hopes.

From the Silver Band

Until 2020 when Covid struck, we've been going to Ypres for an intensive rehearsal weekend and have sometimes played at the Menin Gate Service of Remembrance. We'd very much like to return next year. Please try to help us out.



From the Library

It's been a difficult past few months. It's likely we'll have a temporary home from March but we really hope you can find us a new permanent one. That would be lovely.



From Long Melford in Bloom

Next summer, can we please have glorious sunshine each day,



and rain whilst we sleep.

From Melford Music

We need help so I hope you can bring us two people? We'd like a Programme Co-ordinator and a Publicity person. Please don't bother wrapping them.



From the Community Association

This is asking a lot because it will cost a lot. Please can you give the Old School a new heating system. The gas heaters are slowly being condemned and we want to help save the planet by having a new greener system. If you could manage it before Christmas next year, that would be awesome.



From the Village Hall Committee

Could we please have curtains to dress the stage arch. I hope they will fit on your sleigh.



From the Biodiversity Group

We know you live at the North Pole where the environment is under serious threat, so I think you might want to help us. Please encourage everyone in Long Melford to do their little bit to welcome more nature into our village and become more environmentally friendly.



From Litter-Pickers



We'd like you to have a word with cigarette smokers. Please ask them to put their dog-ends in bins rather than discard them on our streets. They're unsightly, and a pain to pick up with a litter-picker especially when there are hundreds of them.

From the Heritage Centre

We'd like to move to Hall Street so that more people could see our Centre and visit us. I don't suppose you know a generous owner of an empty shop do you?



From Melford Movies

What we'd dearly love is a robot to sell drinks and refreshments and serve them to people at their seats in the interval. If you can't manage a robot, anything that could be used as a raffle prize would be most welcome.



Parish Council Matters

At its November meeting the Parish Council gave the go-ahead for two important projects.

One is to prevent damage to the Upper Green caused by vehicles when the ground is wet. This involves installing gates at the eastern end of the car park by Trinity Hospital and opposite the Black Lion. These can be opened and closed as appropriate and will remain closed when the ground is wet. Resurfacing and reinforcement of key areas will be carried out too. The cost of this will be met jointly by the Parish Council and Holy Trinity church. The Hyde Parker Estate will arrange and pay for repair and reseeding of some areas of the Green that have been badly damaged.

Photo: Steve Thompson



The other project is additional play equipment at the Cordell Place play area, including a roundabout suitable for children with disabilities and a fenced off area with new equipment for toddlers. This will go ahead provided the Parish Council can agree a suitable arrangement with Babergh regarding land ownership and maintenance of the whole play area.

The Parish Council has also applied for the United Reformed Church (URC) building and grounds to be declared 'An Asset of Community Value'. This means that if the URC decides to sell the property, there will be a period of up to a year before it can be put on the open market, in which local community groups can negotiate to buy it.

Having it registered as 'An Asset of Community Value' costs nothing and does not commit anyone to making an offer for it. But it gives community groups the time to assess the options.



The **MELFORD** at Stoneylands

The Directors and the Trustees of the
**LONG MELFORD COMMUNITY
SPORTS TRUST**

would like to take this opportunity to wish you all

*A very
Happy Christmas
and prosperous
New Year*



Our beautiful new venue is ideal for Clubs, Classes and Social Events. Current classes: Boxercise, Rock Choir, Beau Dance, Art Group, My Little Village

Main hall can accommodate up to 120 people, Smaller Boardroom up to 20. Fully Licensed Bar available.

Ample parking on site



Contact Peter or Lynn Turner on
01787 468536 for further details

Parish & District Councillor
John Nunn

Wishes all his Constituents
in Long Melford, Acton and Alpheton



A Happy Christmas
and Prosperous & Healthy New Year.

With best wishes for 2022.



Heritage Matters

Happy Christmas from the Brethren (residents) of Holy Trinity Hospital in 1860, braving the snow in front of the Hospital.
Photo: Long Melford Heritage Trust



Tanswell's
BAKERY

*would like to thank all our customers
for your support and wish you all*

*A very
Merry Christmas
followed by a
Happy and Prosperous
New Year*

*Tanswell's Bakery, Hall Street,
Long Melford, CO10 9JL
Tel: 01787 312106*

HALL STREET OF LONG MELFORD

Hall Street, Long Melford, Suffolk CO10 9JL ☎01787 464828

📧@hallstreetsuffolk 🌐www.hall-street.co.uk



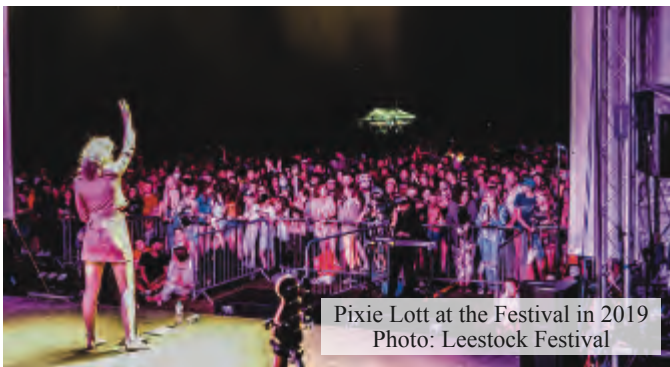
GANT • RODD & GUNN • HACKETT
FYNCH HATTON • EDEN PARK • LOAKE

2022 - a year to look forward to

Lots of regular Long Melford events and some new ones were cancelled in the last two years because of Covid. But many will, fingers crossed, be back in 2022 – here are some of the major events to look forward to.

EVENTS IN MELFORD HALL GROUNDS Leestock Music Festival 3rd and 4th June

We're very pleased to say the Leestock Festival will be back next summer. It isn't just about the music. It was started in memory of Lee Dunford who passed away in his early 20s after being diagnosed with Hodgkins Lymphoma. The Festival stands as a tribute to his memory but also gives him a legacy. The proceeds from the Festival go to Willow Foundation, a charity that works with seriously ill 16–40-year-olds and gives them unforgettable days out.



Pixie Lott at the Festival in 2019
Photo: Leestock Festival

Taste of Sudbury 18th June

The Taste of Sudbury will be back on 18th June. Whilst St Peters on Market Hill in Sudbury is being refurbished, we're delighted to be based in the wonderful grounds of the estate at Melford Hall.

The festival will, as always, be a celebration of local food and drink. Once again there will be lots of local food and drink stalls as well as a Cookery Demonstration Marquee showcasing local chefs and artisan producers.

Long Melford Summer Fete 9th July

On 9th July 2022, a quintessentially English tradition is returning to Long Melford. There will be a good old-fashioned village fete held in the grounds of Melford Hall. The day will have all the traditions you'd expect. You'll be able to take part in a produce show, enjoy a dog show, bunting and



marquees, strawberries & cream and, most importantly, the village stocks!

We'll be working closely with the school and are looking forward to welcoming the whole village for the day. Melford's community groups, charities, businesses and organisations will work together to help make this a village tradition for the future. We'll keep you updated with more news in the New Year.

Big Night Out November 2022

The Big Night Out fireworks display organised by Project Seven will be returning to Melford Hall in 2022 – more details to follow later in the year. Project Seven is a group of like-minded people from Long Melford and the surrounding area who give up their spare time to raise money for local charities. They also help organise Leestock.



Fireworks at the Big Night Out
Photo: Project Seven

Car Boot Sales

These very popular events may return to Melford Hall grounds next summer and we'll be sure to update you with more information if and when they come back.

2022 - a year to look forward to

Long Melford Open Gardens 29th May

In 2008, Robert and Melonie Clubb organised the first Long Melford Open Gardens Day. Over the years, this annual event has not only brought the village together, it's also attracted visitors from far and wide.

After 12 successful years, the Clubbs decided to hand over the organisation of the event. We're delighted to hear that Open Gardens will be back next year on Sunday 29th May. The new organisers are Farley (who runs Breakout) and Paul (of The Mill B&B). They will run Open Gardens under the umbrella of Long Melford in Bloom.



Visitors admiring a garden during an Open Gardens event

Farley and Paul would love to see lots of gardens feature in 2022. If you'd like more information or want to sign up your garden, please contact Paul, tel: 01787 378035 or email: contact@themill-longmelford.com. Half the money raised from the event will go to Long Melford in Bloom. The other half will go to the CJD charity <https://www.justgiving.com/campaign/cureCJD> in respect of Robert Clubb, who very sadly passed away in May 2021.

The Queen's Jubilee 2nd to 5th June

2022 will be the Queen's Platinum Jubilee and the nation will be celebrating her unprecedented 70 years of service. There'll be an 'extended Bank Holiday' from Thursday 2nd to Sunday 5th June. Long Melford will be celebrating this momentous occasion. One thing that has already been fixed is the lighting of the beacon on the Upper Green at 9.15pm on 2nd June. Our beacon, which was created by Robert Clubb and his son, will be one of more than 1,500 across the nation.

Melford Music Plans a 14-week season

After a year off in 2020, Melford Music bounced back strongly in 2021. In August, we held four lunchtime recitals in Holy Trinity, each attracting



The flute, oboe and piano recital in August 2021
Photo: Jilly Cooper

audiences of over 100. Generous sponsorship from The Mill B&B, David Burr, Long Melford Tea Room and the Business Association together with voluntary donations from the audiences, allowed us to donate over £1,000 towards the cost of maintaining the fabric of the church.

In 2022, we'll celebrate 30 years of Fine Music in a Fine Church. We're planning 14 recitals starting on Wednesday 1st June and finishing on Wednesday 31st August.

We've secured the Rock Choir and well-known local pianist Mary Blanchard with clarinetist, Samantha Christopher. There will also be a return visit by Lizzie Gutteridge with her Early Music banquet, which wowed our first audience of over 100 in August this year. We have more aces up our sleeve - watch this space.



The beacon on the Green
Photo: Steve Thomson

Diary Matters

Regular classes & workshops at Long Melford Village Memorial Hall

Mondays	Bounce classes – Jules Cooper	www.bookwhen.com/bouncelongmelford	9.30 to 10.30am
Mondays	Pop Chorus – Yula Andrews	07788 585441	7.30 to 8.30pm
Tuesdays	Pilates - Michelle Cowcher	michellecowcher@gmail.com	10.00 to 11.00am
Tuesdays	Bounce classes – Jules Cooper	www.bookwhen.com/bouncelongmelford	6.00 to 7.00pm
Wednesdays	Zumba classes – Dawn Thompson	www.bookwhen.com/dawnzumba	7.30 to 8.30pm
Thursdays	Bounce classes – Jules Cooper	www.bookwhen.com/bouncelongmelford	6.30 to 7.30pm
Thursdays	Indoor Kurling (1 st and 3 rd Thurs)	Drop in for a free taster session	2.00 to 4.00pm
Fridays	Baby Ballet	sudbury@babyballet.co.uk 07580 693747	9.30am to 12 noon
Monthly	Relaxation Yoga (last Monday of the month)	clareturneryoga@gmail.com	5.45 to 6.45pm

Regular classes & workshops at the Old School

Daily	Yoga Studio – Áine McGovern	www.longmelfordyoga.co.uk 07840 030545	See website
Mondays	Card making – Pauline Andow	01787 228790	12.30 to 2.30pm
Tuesdays	Upbeat (Heart Support Group)	Hilary Neeves 01359 232678	9.00am to 1.00pm
Tuesdays	U3A Art	Vernon Lever 01787 310511	1.30pm to 4.00pm
Tuesdays	Sophia Paper Kite Yoga	Sophia 07968 165185	6.00 to 9.00pm
Tuesdays	Yoga with Clare Turner	clareturneryoga@gmail.com	5.45 to 7.15pm
Wednesdays	Life Drawing	John Garbett 01787 378798	10.00am to 12.30pm
Wednesdays	Keep Fit - Heather Mahony	sheather.mahony@btinternet.com	10.00am to 11.30am
Wednesdays	Friendship Dancers	Robin Hart 01787 269613	3.00 to 5pm
Wednesdays	Tudor Archers	Terry Chittock 01426 160053	7.00 to 9.30pm
Wednesdays	Silver Band	Mike Murkin 01787 312605	7.30 to 9.30pm
Thursdays	Now and Zen Yoga	Fiona Dinning-Cole 07967 706041	10.45am to 12noon.
Monthly	Photography Group (first Monday of the month)	Derek Challis 01787 373738	mornings

Regular classes & workshops at The Melford at Stoneylands (LMFC clubhouse)

Mondays	Beau Dance	Holly Cook 07512 692289	Call for details
Thursdays	My Little Village	Aimee Winsbury-Cutts 07730 680802	Call for details
Thursdays	Beau Dance	Holly Cook 07512 692289	Call for details
Thursdays	Boxercise	Ivan Ambrose 07484 617943	Call for details
Saturdays	Colts and Fillies Junior Football	Ian Ambrose 07970 384576	Call for details
Sundays	Colts and Fillies Junior Football	Ian Ambrose 07970 384576	Call for details

Events may be subject to last minute adjustments in light of Covid-19, so please contact the organisers to confirm. If you would like your activity or event listed here, let us know the details by emailing MelfordMattersAdvertising@gmail.com. Details for February/March need to reach us by

8th January.

Diary Matters

December 2021	Event	Venue/details	Time
Wednesday 1st	Antiques Fair	Village Hall	9.00am to 3.30pm
Thursday 2nd	Parish Council: Planning Full Meeting	Old School	7.00pm 7.30pm
Friday 3rd	Late Night Shopping	Hall Street and Little St Mary's	6.00pm to 9.00pm
Friday 3rd	Suffolk Outlaws	Village Hall - Country & Western Music and Dancing - guests welcome	7.00 pm
Saturday 4th and Sunday 5th	Christmas at Kentwell	Kentwell Hall - www.kentwell.co.uk	10.00am to 4.00pm
Thursday 9th	Good Neighbours Coffee Morning	Old School	10.00 to 11.30am
Friday 10th	Melford Movies "Dream Horse"	Village Hall	7.00 for 7.30pm
Friday 10th	Folk & Acoustic Club upstairs	Cock & Bell poboap123@gmail.com	8.00pm
Saturday 11th and Sunday 12th	Christmas at Kentwell	Kentwell Hall - www.kentwell.co.uk	10.00am to 4.00pm
Friday 17th	Suffolk Outlaws	Village Hall - Country & Western Music and Dancing - guests welcome	7.00pm
Saturday 18th	Long Melford Silver Band Christmas Concert	Village Hall	7.30pm
Sunday 19th	Father Christmas travels around Long Melford	Starting at Rodbridge Hill	4.00pm
Thursday 23rd	Good Neighbours Coffee Morning	Old School	10.00 to 11.30am
Thursday 23rd	Litter Pickers	Call Julie on 375329 for location	2.00pm
January 2022	Event	Venue/details	Time
Wednesday 5th	Antiques Fair	Village Hall	9.00am to 3.30pm
Thursday 6th	Good Neighbours Coffee Morning	Old School	10.00 to 11.30am
Thursday 13th (TBC)	Parish Council: Planning Full Meeting	Old School	7.00pm 7.30pm
Friday 14th	Folk & Acoustic Club upstairs	Cock & Bell poboap123@gmail.com	8.00pm
Friday 14th	Melford Movies "Summerland"	Village Hall	7.00 for 7.30pm
Tuesday 18th	Arts Society of South Suffolk	Village Hall - Ravilious, Bawden and the Great Bardfield Artists; Jo Walton	2.00 to 3.00pm
Thursday 20th	Good Neighbours Coffee Morning	Old School	10.00 to 11.30am
Tuesday 25th	U3A Talk	Cornard Rugby Club - 'Travels of a Botanical Artist'; Reinhild Raistrick	10.00am to 12.00 noon
Thursday 27th	Litter Pickers	Call Julie on 375329 for location	2.00pm
Saturday 29th	Book Fair	Village Hall	10.00am to 4pm
Sunday 30th	Litter Pickers	Call Julie on 375329 for location	10.00am

Parish Recorder

Melford Hits the Record Books

In the early 1950s, the Suffolk Local History Council launched a scheme to have a volunteer Parish Recorder in every Suffolk village. I became Melford's Recorder in 2013. My role is to ensure the survival of valuable material for future local historians by:

- Seeing that the present is adequately recorded
- Looking out for items of historical interest which might be overlooked or lost
- Recording reminiscences of Melford people

I write an annual report, which is kept at the Suffolk Records Office. The latest report was for 2020, a year dominated by Covid and lockdowns,



but village life did continue albeit differently. For example, a Remembrance Trail replaced the cancelled Remembrance Parade. I reported sad news such as the last year of cultivation on Skylarks field and the closure of Ruse the butchers. But there was glad news such as the launch of Long Melford in Bloom and the setting up of the Village Volunteer Network. For how to view the reports, see www.suffolkarchives.co.uk

I'm passionate about local history and appreciate how important all the surviving documents, records and photographs are. Many of them end up being thrown away. If you have a collection relating to Melford and would like to donate it once you no longer need it, please put a note on top of your file saying, *'In the event of my demise, please do not throw these documents away – please contact Julie Thomson or the Suffolk Records Office, who will ensure they are available for future generations to use for historical research'*.

Thank you

Julie Thomson
Tel: 01787 375329
Email:
longmelfordparishrecorder@outlook.com



Steve White Electrical Services

Part P Domestic Installer

Fully qualified, insured and guaranteed

- Extra sockets/lights
- Fuse board changes
- Electric Showers
- Fault finding/repairs
- Outside power to garden/garage
- Immersion Heaters

FREE ESTIMATES

01787 281254 or 07920 841041



Over 20 years experience
Boiler Servicing and Installations
Landlord Gas Safety Checks
Full heating system power flushing

BB Plumbing and Heating

Ben Boxall

Mobile: 07894 856366

Based in Long Melford



Santa Claus is coming to town...

Festive Long Melford



Saturday 27th November 2021

11:00am – 4:00pm

Independent Shops * Street Entertainment

Santa * Reindeer * Punch & Judy

Unicorn * Morris Dancers * Steam Engines

Snow Machines * Face Painting & more

Christmas Tree Light Switch On 4:00pm on Policeman's Green

All information correct at time of going to print. Pre-booking for Santa essential via melfordgreensanta@gmail.com For more information please visit www.visitlongmelford.co.uk

**FATHER CHRISTMAS
TRAVELS AROUND LONG
MELFORD**

SUNDAY 19/12/21

**Rodbridge Hill 4pm and
then around the village with
the following approximate
timings:**

**Theobalds Close, Westropps, Station Road, Roman Way
Estate**

**4:15pm - St. Catherines Rd, Meetingfield, Hall Street, Bull
Lane**

**4:30pm - Chadburn, Middle Way, Raile Walk, Sampson
Drive, Braithwaite Road**

**5:05pm
Cordell Road, Cordell Place, Laurel Drive, Swanfield**

5:50pm Narefield

**Please keep an eye on our Facebook page for
live on the night updates!**



THE SWAN LONG MELFORD

DELICIOUS FOOD | BEAUTIFUL GARDEN | LUXURY ROOMS

HALL STREET, LONG MELFORD, SUDBURY, CO10 9JQ

01787 468653



All photos kindly provided by Holly Jones-Warren except where indicated.



Women's Tour Cycling Event

Local organisers ensured that Melford laid on a great welcome for Stage 6 of the Women's Tour cycling event, which ran through the village on Saturday 9th October. With "Pink, White and Bike"-themed decorations and stalls and entertainment running from the Green through to Little St. Mary's, there was plenty to enjoy before and after the peloton passed through.

If you blinked, you may have missed the cyclists as they whizzed past, but you couldn't possibly have missed the



Photo: Unknown



Photo: Amy Hyde-Parker



Beautiful things, great coffee, exceptional cake
Gifts, Interiors, Jewellery, Fashion
100% Customer focused

DILLY DALLY is a family business dedicated to bringing you the best shopping experience with the best welcome. Gift-wrapping, click & collect or delivery.
07791039372 <https://dillydally.co> @dillydallylongmelford
Hall Street, Long Melford, CO10 9JL





entourage of support vehicles and motorcycle outriders. The barrage of noise from their horns, sirens and whistles whipped up the excitement before and after the cyclists sped past on their way to the sprint section finish outside The Swan.

Glorious weather and live music helped to create a party atmosphere for the many hundreds of residents and visitors who came to cheer on the cyclists. It was heart-warming to see so many people having a great time and making the most of the first street event in Melford since 2019.

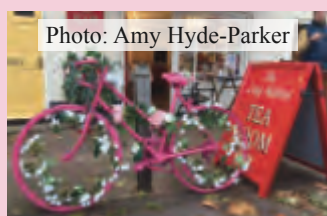


Photo: Amy Hyde-Parker

Photo: Graham Eade

Frangrance by Candlelight

Tel: 07968 577247

Nestled in the heart of Long Melford's Hall Street, we offer a good selection of gifts for all occasions



We stock Yankee, WoodWick, AromaWorks, Woodbridge Soy Candles and much more

*Open 10.30 until 4 Wednesday - Saturday
10.30 until 3 on Sunday*



*Frangrance by Candlelight
Waterloo House, Hall Street, Long Melford,
Suffolk CO10 9JL*

Message or call 07968 577247 for any enquiries

Scutchers

LONG MELFORD

Finally back open for business!

www.scutchers.com



Thanks to everyone for their ongoing support

Opening Times

Thursday, Friday and Saturday
12noon to 2pm (last orders)
7pm to 9.30pm (last orders)

Westgate St
Long Melford
Tel: 01787 310200

Nature Matters

Even in the winter months, nature can create some stunning scenes - captured beautifully by local photographers.



Photo: Steve Thomson



Photo: Holly Jones-Warren



Photo: Lisa Cunnington



Photo: Alana Jones



Photo: Steve Thomson

Traditional Rugs



OPEN

Monday to Saturday 10:00am - 5:30pm

01787 882214

The Old White Hart,
Long Melford, Sudbury Suffolk, C010 9HX
www.rugandcarpetstudio.co.uk

Contemporary Rugs

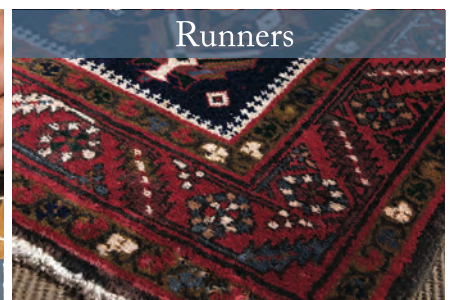


Kelims & Flatweaves



Restoration & Cleaning

Runners



Nature Matters

Welcoming Nature into Long Melford

By the time you read this, the Biodiversity Group will have held a series of events aimed at getting everyone involved in enhancing the natural world. Our first event involved the Beavers planting native bulbs at the front of St Catherine's Church. Bulbs are an important source of nectar early in the year when the odd sunny day brings out the bees. At the end of October, Cathy Smith from Suffolk Wildlife Trust gave helpful advice about attracting wildlife into gardens.

We asked children to collect native tree seeds and join us in planting them. All the tree seeds will be grown on and in a few years the children will be able to plant them in the village – maybe we can even create a village wood. We continue to advise the Parish Council on how best to manage the Melford Walk for nature and, with volunteers' help, will be doing a lot of work over the winter.



The Beavers at St Catherine's for the bulb planting
with Jane Burch in the centre at the back
Photo: Carolyn Spraggons

We're receiving some free young trees and hedging plants which will be planted around the village – outside the Bull, in the Cemetery, the Country Park and alongside the allotments behind Orchard Brook.

For 2022, we've applied to Babergh for grant funding to enable us to do much more. We hope to provide the materials and know-how for people to make bird, insect and hedgehog houses to go in gardens around the village. Watch out for dates early next year when we'll invite you to join in!

We've suggested areas, currently mown by Babergh, on which wildflower meadows will be created – these will be prepared and sown over winter. If anyone has an area where they'd like to try and establish a wildflower patch, we're more than happy to advise on how best to do this and may be able to help with providing seeds – contact jane_burch@yahoo.co.uk.

Look out for our news and events on the Long Melford Facebook Page.

NEED A PLUMBER?



A P PLUMBING

**Professional service with
over 40 years' experience**

**All plumbing work
undertaken**

**Suffolk and all surrounding
areas**

Free estimates - call today

01787 282826 07940 516199

poultonplumbing123@gmail.com

**3, The Old Orchard, Glemsford,
Sudbury, CO10 7SX**



**long melford
biodiversity
group** 



The largest Antiques, Interiors and Lifestyle retail Centre in the East Anglian region

16,000 sq. feet of display areas over 4 extensive floors

Fine quality Antique Furniture, Art and Collectables from the 17th Century onwards

Vintage, retro and later furniture

Glassware and porcelain

Bronzes, silver, silverplate and other metalware

Lighting, carpets, crafts and artisan gifts

Regular auctions of between 200-400 specially selected entries

Savour your purchases whilst enjoying the fine selection of food and drink in the Pullman Tea Room (closed Tues)



Mon - Sat 10.00am to 5.00pm; Sun 11.00am to 4.00pm
The Old Maltings, Hall Street, Long Melford, CO10 9JA



Community Hub and Business Support

We have now been open 6 months and met so many residents and visitors to the village. Breakout has been shaped by you all for personal use, business use and so much more. Thank you for your support on such a brand new venture to the village. From IT support to personal life admin we have worked with so many people already, come in or drop us an email to ask how we can help

IT / Websites

Getting small businesses online with value for money and great service at the heart of what we do.

Printing

Whether 1 or 100 pages, we can print and laminate A4 and A3, colour and b/w.

Desk Hire

By the hour or day, you can hire a coworking desk or office for your team. Great WiFi, coffee and printing included.

Business Support

From bookkeeping to marketing we help businesses concentrate on their talent whilst we work for them in the background.

Call Us. 01787 312064

Address : 10 Little St Marys, Long Melford, CO10 9LB

Website : www.breakoutonline.co.uk

Mailbox : hello@breakoutonline.co.uk

The Long Melford Tea Room



A wide selection of loose leaf teas

Homemade Cakes and Scones

Light Lunches

Traditional Afternoon Tea (*pre-book only*)

The small Tearoom with a big Welcome.
We look forward to seeing you.

Open 10-5pm

Closed Tuesdays and Sundays

1 Dudley House, Hall Street

01787 881361

Community Matters

Heritage Centre Gains Charitable Status

Our application to the Charity Commission for charitable status has been successful. Although our HQ will still be called the Museum and Heritage



The Museum and Heritage Centre
Photo: John Nunn

Centre, the governing body will be the Long Melford Heritage Trust. We now plan to work towards Museum accreditation,

which should bring many benefits to the Trust and to our village.

The Trust has an Archaeological Unit which is striving to improve our knowledge of ancient Melford. We also hope to work with our Primary School helping the children further their knowledge of our village and the surrounding area.

We welcome new volunteers. If you're interested in joining our team, please email the Trust at melfordheritagetrust@gmail.com

Litter Pickers Join Forces

The Long Melford Litter Pickers and Acton Wombles recently joined forces, to clear litter from a stretch of road between our villages.

One group started at the Melford end of Bull Lane and the other in Melford Road, Acton. The teams met in the middle to swap accounts of the weird and worst things they'd found, before heading back again on the opposite side of the road.

We collected a staggering 17 sacks of litter and umpteen wine bottles. The find of the day was a Kindle, but sadly months of sitting in a ditch made it fit only for the bin.

In 2022, we'll continue our quest to keep Melford litter free, by meeting twice a month. January dates are

Thursday 27th at 2pm and Sunday 30th at 10am. The locations will be decided a few days beforehand depending on where litter is spotted. If you'd like to join us, please email longmelfordlitterpickers@gmail.com.

Busy Beavers

It's been a busy time for the Beavers. We've litter picked with Sudbury community wardens. We've planted bulbs at St Catherine's church supported by the Biodiversity group. We've had a visit from Nick at the library for the Book Reader badge. We've welcomed eight new Beavers who've been given their first badges, woggle and scarf.

We're hoping that we'll have been part of the parade on Remembrance Sunday this year. Let's hope we have the St George's Day Parade in April, which is a district event comprising 800+ scouts.

Community Markets at the Old School

By the time you read this, we'll have held six Community Markets. There's been a steady increase in the number of stallholders and footfall. All stalls have been free to groups to sell their items. Entry to the market has also been free.

The Community Market has succeeded in providing community groups with a place where they could raise funds and where people could have a chat and enjoy being out and about post lockdowns.

There will be no markets during the winter months, but maybe we'll be back in time for Easter 2022!

Long Melford Litter Pickers and the Beavers were both busy litter picking this autumn.



Community Matters

Long Melford in Bloom

In early November, Long Melford in Bloom switched from its summer displays into winter mode. The colour theme is yellow, white and blue using pansies, violas and polyanthus. We hope you enjoyed the summer displays which lasted really well, from May until the end of October.



The winter plants should be in place until next May when the Summer 2022 displays will be planted, in good time for the Queen's Jubilee in early June.

Long Melford in Bloom is run by the Parish Council with the help of a fantastic band of volunteers. Key supporters including Long Melford Fire Station, Long Melford Co-op, Melford Court, Tanswell's Bakery, KP Valeting & Detailing, Breakout, Long Melford Tea Room, Perrywood, Cherry Lane Garden Centre and KHA Surveyors. The project also receives incredible

support from Pat Davey and her book sales and from individual donations.

If you'd like to become involved either as a volunteer or as a sponsor, please contact Jonathan Ewbank (jonathanewbank145@gmail.com).

Seasonal Advice from Long Melford Neighbourhood Watch

As the nights draw in, we'd encourage you to secure your outbuildings and garages and to ensure that anything of value is safely locked away.



This is also an important time to check on your neighbours, especially if they live alone. It doesn't take long to knock and check that everything is OK.

If you'd like to join Long Melford Neighbourhood Watch, you can find us on Facebook or call 07967 472488. You'll be working with us to make our homes and businesses safe.



Edward Charles Interiors is a family upholstery business and has had a showroom in Ringers Yard, Long Melford for 7 years. The business has been established since 1971 with a workshop in Essex.

www.edwardcharlesinteriors.co.uk
01787 377705
edwardcharlesinteriors@btconnect.com

**EDWARD
CHARLES
INTERIORS**

*Bespoke
Handmade
Furniture*

We make bespoke handmade upholstered furniture such as made to measure sofas and chairs, as well as headboards, ottomans etc.

We also offer a full reupholstery service including furniture in the home, as well as pubs, hotels and also vintage cars, boats, horseboxes and caravans.



Jd CREATIVE • HAIR



Adj The Bank House,
Hall Street,
Long Melford, CO10 9JL
Tel: 01787 312233
Visit: jdcreativehair.co.uk



CULTURE, COFFEE & CAKE!

in your own Village Hall

The Arts Society – South Suffolk offers a stimulating monthly lecture programme delivered by experts in all aspects of the Arts. Lectures from January 2022 will take place at the Long Melford Village Memorial Hall on the 3rd Tuesday each month (barring July/August or December) at 2pm.

TRY US FOR FREE: Contact: Carole Ashton, Membership Secretary, by tel/email – 07766 107880
creevesashton@gmail.com quoting code **MM3**

Membership includes 10 lectures; a quarterly Arts Magazine **plus** the option of Virtual Tours around places of interest and Special Interest subject coverage at a small additional cost.

Further details: Visit our website:
www.tassouthsuffolk.org.uk

SO THEY DO COOK AFTER ALL! RAVILIOUS, BAWDEN & THE GREAT BARDFIELD ARTISTS

In 1932 a fascinating artistic community was started in Great Bardfield, Essex by Edward and Charlotte Bawden, Eric Ravilious & Tirzah Garwood. Other artists joined them, with their work capturing the soon to change world of rural England. In 1954 they started the popular Open Studios Movement which persuaded people that artists were quite normal!

Lecture to take place on TUESDAY 18 JANUARY at 2pm

Community Matters

The Swan Donates to the Cordell Place Play Area

On 2nd October, the Swan in Long Melford held a charity Brunch with the profits going towards the cost of providing more play equipment (especially for toddlers) at the Cordell Place play area. Thanks very much to the generosity of Onur (the landlord), the event raised £330 for the play area.

Another breakfast event is planned for next February or March to raise more funds for the play area – details in the next issue of the magazine.



Charity 3 Course Brunch

FUNDRAISING FOR
CORDELL PLACE PLAY AREA

An Update from the WI

The WI welcomed new members and enjoyed meeting villagers at our “Cuppa and a Cake” sessions at the monthly Community Market. On 11th November, we learned First Aid awareness, including the use of defibrillators, from Martin Richards. On Sunday 14th November, we laid a wreath as a mark of Remembrance.



Our Christmas celebrations will include an evening meal at The Bull and our Christmas Social which includes Secret Santa, carol singing and a bring-and-share buffet – lots of fun and laughter!

Hopefully 2022 will see the return of our Annual Garden Party at Melford Hall, a boat trip on the Stour and local afternoon teas as well as our monthly evening get togethers.

Cookery Matters

Tanswell's Famous Mince Pies

We're delighted to bring you a very seasonal recipe this issue and are indebted to our wonderful village bakery, Tanswell's, for sharing their ever-popular mince pie recipe. It looks as though the really tricky part will be the waiting until they're cool enough to eat once they come out of the oven.



Ingredients:

375g plain flour
250g chilled butter
125g caster sugar plus extra for sprinkling
1 medium free-range egg
1 large jar mincemeat, approx. 400g

Method:

1. Add the flour to a large bowl and grate in the butter or use cubed cold butter. Mix gently to make a crumb before adding the sugar and egg and mixing them in to form a dough.
2. Divide the dough into two and pat into rounds before chilling for 45 minutes.
3. Heat oven to 200 degrees or gas 6 and lightly dust the worktop with flour.
4. Roll the dough to 3mm thick and cut out 16 bases out using an 8cm cutter.

5. Use these to line a bun tin; if the dough is sticky, a spatula will help to move them safely into the tin.
6. Cut 16 tops using a 7cm cutter.
7. Add a level tablespoon of mincemeat to each base and resist the temptation to overfill.
8. Place a lid on each and gently firm the edges together before baking for about 20 minutes.
9. Once they are out of the oven, sprinkle some caster sugar on each and leave to cool in the tin.

Hints:

1. If you're using a muffin tin, use a 9cm cutter for the bases but still a 7cm one for the lids.
2. Any spare pastry will be perfect for jam tarts.



Enjoy a Happy Christmas and your mince pies.

Jen's House Clearances

Recycling rather than landfilling

House Clearances
Commercial Clearances
Bereavement Clearances
End of tenancy Clearances
Estate agent and solicitor work undertaken
Shed and Garage Clearances
Help with Hoarding

Fully licensed waste carriers

**For a free quote
Call Jenna Martin**

01787 211671

07805177032

Jenna@jenshouseclearances.co.uk

www.jenshouseclearances.co.uk

Tony Read Carpentry

MDF Furniture maker,

2nd fix carpentry,

Wood-turner & kitchen fitter

Tel: 07970 559227

Gardening Matters – Notes from the potting shed

This is the time of year when curling up with a large cuppa and a seed catalogue is probably the most appealing form of gardening, but there are still some important other outdoor tasks to tackle.

If you clear most of the leaves off your lawns and away from the base of any roses, you'll reduce the risk of infection for your precious plants as the leaves decompose. The wildlife will be very grateful if you keep some leaves tucked away in corners or near log piles. If you can stash the bulk of the leaves away in sacks or a wire pen to make leaf mould it will really come in handy this time next year as seed compost or soil improver.

We've had a query about whether frozen lawns should be walked on. We'd suggest avoiding this if you can as the frozen blades of grass are brittle and very easily damaged. It's even more important to avoid walking on a snowy lawn as this will cause compaction and damage the grass underneath as well as increasing the risk of fungal disease developing. Any damaged grass will repair itself but it may take several months of the next growing season to do so.

December and January are the months for pruning fruit trees if the fruit has a pip rather than a stone, so apple, pear and quince trees will benefit from a trim and tidy up in this season.



If you're planning to grow chilli peppers and aubergines next year, it's worth getting the seeds in at some point in January as they need a long growing season for the fruit to reach maturity whilst the light levels are still good.

If you have a heated propagator, so much the better.

We're looking forward to 2022, which promises to be a great year in Melford for gardeners. Not only is the seed swap coming back by popular demand, but the flower and produce show will also be returning as part of the village fete on 9th July. We're hoping for loads of entries in every class and full details of what you can grow to enter in the show will be available in the next issue of Melford Matters. In addition to that, we also have the sweet pea challenge. Have you started yours off yet?

In the meanwhile, enjoy your cuppa and seed catalogue but don't forget that beautiful potted bulbs for Christmas will be available at the **Library Christmas Fair on 27th November**, but remember, they sell out fast ...

Please do keep sending your queries and tips in to Melfordmatterslifestyle@gmail.com



Happy gardening!



Lead the Way

Dog Training & Behaviour Management

1-1 and class training

Puppies 🐾 Obedience 🐾 Socialising

🐾 Agility for fun 🐾

🐾 Behaviour Management 🐾

Based in Long Melford

Contact Sara Oakley on:

0790 990 4357

For all your dogs training needs!

www.leadthewaytraining.co.uk

Richard Kemp

County and Parish Councillor

01787 378149

richard.kemp@suffolk.gov.uk

Adam Kemp

Independent Financial Adviser

BA Hons, Dip PFS, Cert CII (MP & ER)

Pension, investment, mortgage, protection and equity release advice.

Please contact for free initial consultation:

01284 724013 (option 7) or 07988 961240

adam.kemp@amas.co.uk



Brain Matters



No prizes for guessing that the theme for the Quiz in the 5th issue of the magazine is all about matters associated with Christmas. Answers on page 34.

1. Who gave Bob Cratchit a turkey in Dickens' 'A Christmas Carol'?
2. Who were Gaspar, Balthasar and Melchior?
3. In which ocean is Christmas Island?
4. According to the song 'The Twelve Days of Christmas', what did a true love give on the third day of Christmas?
5. Which country makes an annual gift of a Christmas tree which is erected in Trafalgar Square?
6. What is another name for Christmas pudding?
7. Who had a Christmas No.1 with 'Mistletoe and Wine'?
8. From which Cambridge college is the Festival of Nine Lessons and Carols broadcast every year on Christmas Eve?
9. Who starred as George Bailey in the 1946 Christmas classic film 'It's a Wonderful Life'?
10. Who or what are Dancer and Prancer?



RANGER PRODUCE

JILL BERRY
07748519660

rangerproduce@gmail.com

Free Range Eggs
Fresh Farm Eggs
Potatoes

Fresh fruit and veg delivered daily
Logs, coal, kindling
Bird seed and feeders
Home-made cakes
Pickles, chutneys, jams and marmalade
Peat-free organic compost

Delivery available - please call.
Farm shop, Borley Road

suregreen
...delivered in a click

QUALITY LANDSCAPING GOODS FROM A LOCAL, FAMILY-OWNED SUPPLIER IN FINCHINGFIELD

www.sure-green.com

Timber • Electric Fencing • Wire
Aggregates • Planters • Compost
Tree Guards • Vine Protection
...PLUS, SO MUCH MORE!

Order online at:
www.sure-green.com

Visit us at:
Viridis House, Toppesfield Rd,
Finchingfield, Essex, CM7 4NZ

Contact us on:
01376 503869
sales@sure-green.com

Trade accounts available

FREE Click & Collect **Local HIAB Delivery**

Cephas Care
Your life, your choice, your way

Providing Domiciliary Care,
Community Support & Supported
Housing across Suffolk




About us
Cephas Care Ltd is a large independent care provider working across Suffolk, we have been established since 1994 and support over 200 customers and employ over 250 staff.

- We have vacancies across Lavenham, Clare, Sudbury and Long Melford for Full and part-time contracts.
- Video interviews are available to work around your schedule.
- Shift patterns to work around you and we pay double time for bank holidays.
- Mileage and travel time paid for Homecare.
- Full training will be given with the opportunity for progression, courses and qualifications.

Contact the recruitment team today

☎ 01473 322600 ✉ Recruitment@cephas-care.co.uk
Made with PosterMyWagon 🌐 www.cephas-care.co.uk



**DO YOU NEED
HELP AT HOME?**

I am local and have
excellent references as a
housekeeper and carer/
companion.

I am able to cook 

 clean and shop 

and have always worked in
private houses.

**Contact Emma on
07557 367445**

The magazine welcomes contributions from everyone in the village. Content should focus on information that will benefit and inform the village and villagers. Where there is limited space, priority will be given to local and community information and updates that benefit all. Where there is competition for remaining space, the editor will act fairly to ensure contributors and community organisations are treated equitably. Contributors and advertisers are responsible for ensuring that their content is accurate, free of obscene, abusive or discriminatory language and not libellous or in breach of copyright. The magazine will prioritise, but not be limited to, securing adverts from local businesses. Errors and omissions excepted.

Melford Matters is affiliated to Long Melford Village Memorial Hall for accounting purposes and forms an extension to the Village Hall's objectives. It is a non-political 'not for profit' community initiative run by an Editorial Committee of volunteers. The team comprises Phil Buck, Sue Buck, Jane Ebejer, John Nunn, Stuart Palmer, Lisa Tipper, Chris Watts, Dave Watts and Philip Windsor. Special thanks to Alex Windsor for the cover design and to Steve Thomson for the cover photo. Melford Matters is printed by Indigo Ross Design & Print Ltd.

**Coach House
Leather Workshop
Long Melford**

As an experienced, qualified Saddler
I specialise in various leather repairs.

All horse tack/saddle repairs, dog
leads, collars and training aids.
Belts, bags, iPad and phone covers,
etc. Also the above items can be
made up new.

(I do not repair shoes and boots.)

Call or text: Susie Negus
Tel: 07543321492

Health Matters

Fit to Face the New Year?

Have you ever made a New Year's resolution to get fit? Perhaps more than once? Well, how about making 2022 the year to achieve it? We have a wonderful range of classes available in our lovely village with something to suit almost every level of mobility. We thought this was the time to review what's on offer on our doorstep to help us all to become our most frisky and fabulous selves in the coming year.

Details of venues and class times are all set out in Diary Matters on pages 14-15.

Let's start with the ancient but ever popular practice of **Yoga**. The Yoga Studio at the Old School hosts independent teachers with various styles and specialisations. Regular yoga practice can increase flexibility and suppleness. Some sessions focus on relaxation and meditation. After the stresses of the past couple of years that certainly sounds appealing.



A moment of meditation during a yoga class.
Photo: Laurence Mitchell

Pilates improves core and back strength but also tones and strengthens muscles, improving flexibility and general wellbeing. It also increases energy levels at the same time. It can be particularly efficacious for anyone with a back problem.

If you'd like something more up tempo, combining dance, upbeat music and high energy exercise, then Zumba or BOUNCE might be for you.

Zumba is a Latin inspired dance fitness class, with lively choreographed moves set to upbeat music. 'Ditch the workout, Join the Party!' It's guaranteed to raise your heart rate and no one leaves a Zumba class feeling anything other than cheerful.

((BOUNCE)) is a 60-minute-high intensity, low impact choreographed fitness class performed on mini trampolines. Suitable for all ages and abilities, it's three times more effective than floor-based workouts. With coloured disco lighting and energising music it's a great mood booster!

((BOUNCE)) BEATS is a percussion-based workout using weighted drumsticks. Routines are performed on and around the trampoline. The carnival style of music makes this class joyful and fun for 45 minutes of rhythm and dance fitness.



A ((Bounce)) class can give you a lift.
Photo: Jules Cooper

Health Matters

If you're keen to improve your core fitness and cardio levels, then how about Boxercise or Bootcamp?

Boxercise is a boxing related exercise (don't worry – you don't hit anyone) that's suitable for all ages, abilities and fitness levels. It's a fun way of achieving an all over body workout, improving your general fitness and mental health as well as being an effective cardio workout and a confidence booster. A great way to punch the week's stress out of your body!

"Fit with Sam" runs outdoor **Bootcamp** sessions involving cardio and strength training using interval techniques mixed with weights, agility equipment and bodyweight exercises. Bootcamp caters to all fitness abilities as each individual works at their own pace and aims for a whole-body workout.



A Bootcamp session under way at Rowhedge Farm.
Photo: Sam Bull



Boxercise is a cardio workout and a confidence booster
Photo: Ivan Ambrose

And for the youngsters, **Baby Ballet** runs classes for those aged 6 months to 6 years to learn to dance and develop key life skills in a healthy, sociable, caring and safe environment. Parents stay for the sessions and join in the fun.

Have you always wanted to learn some dance moves but never found the time? Well, here's the solution. **Beau Dance** runs classes at the Football Club for tots, youngsters, tweens and over 50s!

Another dance option is provided by **Friendship Dancers** which is a friendly, social class where European folk dancing is taught. All ages and abilities welcome and no need to bring a partner – just comfortable shoes.

If you'd like to combine the social aspect of meeting others with modest exercise, then **Indoor Kurling** may be just up your street! Indoor Kurling is a gentle sport for all ages and abilities and a great way to meet up with others. You can even play from a wheelchair. The organisers say "no skill is required although an ability to laugh is useful" and with refreshments at half-time and a friendly atmosphere, what's not to love about this?

Both Friendship Dancers and Indoor Kurling offer free taster sessions, so you literally have nothing to lose!

Hope to see you on your mat, trampoline or in any class early in 2022 and let's make this year the one where we keep that resolution. Go for it Melford!



Indoor Kurling
Photo: Philip Windsor



Chiropodist

Established & locally based (Alpheton)

- Quality foot care
- Caring service tailored to your individual needs
- Expert advice
- Experienced with additional nursing qualification

If you are unsure as to whether chiropody is for you, please do not hesitate to contact me.

Elizabeth Gibson MSSCh MBChA
Health & Care Professions Council Registered
• Reg. No. CH20192



CLINIC

Casabella

Hall St. Long Melford
CO10 9HY

T: 01787 370300

HOME VISITING PRACTICE

Long Melford, Sudbury, Clare
& surrounding villages.

T: 01284 827380 M: 07798 806184



**ON POINT.
BARBERS**
Traditional Male Grooming

LONG MELFORD

WWW.OPBARBERS.COM

01787 743043

**1 Smaley lane,
Long Melford,
CO10 9JH**



HOME DELIVERY OFFER (7 mile radius)

Celebrating 30 years and
three generations - Est 1991
£10 off all orders over £25
Monday, Tuesday and Wednesday

PLEASE CALL FOR DETAILS

Pre-order before 5pm by calling us
and choose delivery time.
Delivery fees apply.

**We do hope you are
all keeping safe and well.
Thank you for your continued support.**

The Melford Valley, Hall Street
Long Melford, Suffolk CO10 9JT
Tel: 01787 311518 / 310079

Sport Matters – Cricket

Winter Stops Play

It's the close season at the Cricket Club and no Ashes for us. But there's still much going on, including restoring the square and outfield after a full 6-month schedule of matches, coaching sessions and cricket camps.

It was so good to get back to normal this past season. As for 2022, the club is keen to grow. Players of all ages, abilities and genders, as well as



Working on the square this autumn
Photo: Justin Lewis

match officials and local residents who might be interested to join as social members will all be warmly welcomed.

Winter nets are expected to start in January, with the first ball of the new season due to be bowled around Easter.

Many thanks to all our sponsors and advertisers, as well as local businesses with whom we've built great partnerships recently such as Nethergate, Clark & Sons and Spitfire Mowers. We're very proud to use and enjoy their products and services, and to support our local community.

During the winter months, you're welcome to visit the ground of course, please just be sure to treat our space with the same respect you'd pay your own front garden. Many thanks from all at Long Melford CC.

Sport Matters – Football

News from Long Melford F.C.

If you're in need of some fresh air after the Christmas festivities, why not come along to Stoneylands on the 27th and watch a local derby when Melford take on Walsham le Willows. Kick off 11am. We have two home games before Christmas against Newmarket and Kirkley on the 4th and 18th respectively.



Nathan Bartlett, our new Under 18's Manager has seen two of his players make their first team debut

plus four boys regularly playing for the Reserve Team. At the other end of the service spectrum, our long-standing Secretary, Richard Powell is blowing the whistle on time. Happy retirement Richard and thank you for all your good work.

After many frustrating challenges and delays, our new building is virtually complete and providing a much-needed new home for our football teams. We're also attracting many community groups from pre-school to those that can dance, paint or sing!



Melford in action against Whitton United
Photo: Stewart Ambrose

Sudbury Football and Rugby Clubs Flying High

And that's why we thought we ought to give our neighbours a mention. AFC Sudbury won six preliminary games to qualify as giant-killers for the First Round proper of the FA Cup. They played Colchester United in a game shown live on BBC TV and watched by a capacity crowd of 2,000 but sadly lost 0 - 4.

And, at the time we went to press, Sudbury Rugby club were sitting right on top of the London 1 North division, having won 8 out of 9 games and scored an average of 30 points a game.

Directory of Clubs and Societies

Group	Contact	Phone/email
Beading (Suffex Bead Club)	Victoria Power	07866 996124
Beavers	Carolyn Spraggons	01787 370686
Business Association	Jane Ebejer	01787 375862
Coffee & Cake @ St Catherine's	Margaret Taylor	01787 880875
Connect	Pam Tonks	07890 880976
Cricket Club	Ivan Newman	07944 893167
Explorers	Thomas Tracey	bovineesu123@gmail.com
Folk & Acoustic Club	Pauline O'Brien	poboap123@gmail.com
Football Club	Richard Kemp	01787 378149
Friends of LM Church Building Fund	Richard Michette	01787 377164
Friends of Long Melford Library		help@suffolklibraries.co.uk
Good Neighbours' Scheme	Helen Eaton	07504 249179
Historical and Archaeological Society	Julie Thomson	01787 375329
Holy Trinity & St Catherine's Church	Rev. Matthew Lawson	01787 301845
Keep Fit	Heather Mahony	01449 736662
Long Melford Community Sports Trust	Peter Turner	01787 468536
Long Melford Cubs	Stacey Cole	07368 519981
Long Melford Group Scout Leader	Stephen Spraggons	melfordgsl@aol.com
Long Melford Museum and Heritage Centre	John Nunn	01787 313496
Long Melford Litter Pickers	Julie Thomson	01787 375329
Long Melford Open Spaces	Graham Eade	01787 319120
Long Melford Parish Recorder	Julie Thomson	01787 375329
Long Melford Photographic Group	Derek Challis	01787 373738
Long Melford CE Primary School	Mrs Woolmer	01787 379929
Long Melford Scouts	Graham Souch	1stlmscouts@gmail.com
Long Melford Women's Institute	Jane Ebejer	01787 375862
Melford Music	John Watts	01787 310373
Neighbourhood Watch	Stuart Finch	07867 371564
Over Sixties Club	Mrs Albon & Mrs Woodgate	371413/376711
Old School bookings	Rosey Eade	01787 319120
Project Seven	Andrew Hagger	07980 526067
Royal British Legion	Martin Richards	01787 377567
Scout & Guide HQ bookings	Vicki Ramdhanie	lmsglettings@gmail.com
Silver Band	Mike Murkin	01787 312605
The Arts Society South Suffolk	John Ashton	07899 872222
Trinity Singers	Sue Roberts	01787 319850
Upbeat Heart Support	Hilary Neeves	01359 232678
Village Hall bookings	lettings.longmelfordvillagehall@hotmail.com	07379 894325

Please notify us of any additions or changes by emailing MelfordMattersAdvertising@gmail.com. Amendments must be received by **8th January** to be included in Issue 06 – February/March 2022.

Quiz Answers

- | | | |
|-----------------------|-------------------|-----------------------------|
| 1. Scrooge | 5. Norway | 9. James Stewart |
| 2. The Three Wise Men | 6. Plum Pudding | 10. Two of Santa's Reindeer |
| 3. The Indian Ocean | 7. Cliff Richard | |
| 4. Three French Hens | 8. King's College | |

Christmas Tide at KENTWELL

A Traditional Festive Family Day Out

VICTORIANS • CHRISTMAS TRAIL
FAMILY FUN & ENTERTAINMENTS
FATHER & MOTHER CHRISTMAS

Sat 4, Sun 5,
Sat 11, Sun 12 Dec

WWW.KENTWELL.CO.UK

KENTWELL HALL • LONG MELFORD • SUFFOLK CO10 9BA



GRAPHIC DESIGN BROCHURES PRICE LISTS
CORPORATE REBRANDING

BUSINESS CARDS & APPOINTMENT CARDS

NOTEPADS WEDDING STATIONERY GIFT VOUCHERS NEWSLETTERS

LARGE FORMAT PRINTING

POSTERS FULLY RESPONSIVE WEBSITES BOOKLETS

QUESTIONNAIRES PULL-UP ROLLER BANNERS

CALENDARS PARISH MAGAZINES VEHICLE LIVERY DESIGN

FOLDED LEAFLETS

WEBSITE DESIGN

POSTCARDS SIGNAGE & RETAIL DISPLAYS THANK YOU CARDS

DIGITAL PRINTING COMPLIMENT SLIPS

CHRISTMAS CARDS

CONTENT MANAGED WEBSITES MOTORBIKE DECALS

GICLÉE FINE ART PRINTING CANVASES

CONTINUATION PAPER LABELS

ADVERT DESIGN

GREETING CARDS TIMETABLES

PACKAGING CATALOGUES CROSS MEDIA MARKETING ENVELOPES NCR PADS

STATIONERY DESIGN OUTDOOR BANNERS

ORDER OF SERVICES

EMAIL SIGNATURE DESIGN TAGS

LEAFLETS FORMS

MENUS

LOGO DESIGN SOCIAL MEDIA BRANDING

FOLDERS & INSERTS

EMAIL MARKETING INVOICES WEBSITE SECURITY TICKETS

CERTIFICATES

LITHO PRINTING

LETTERHEADS

WEB 2 PRINT SOLUTIONS EXHIBITION STANDS & BOARDS

E-COMMERCE WEBSITES DELIVERY NOTES

25

indigo
ross

CELEBRATING OVER 25 YEARS OF
FORWARD THINKING
DESIGN, PRINT & WEB

01787 880 260

hello@indigoross.co.uk

indigoross.co.uk



THE GEORGE & DRAGON



14 bedroom hotel

Large gardens with tables

Extended internal space

Disabled help paging system

Wheelchair access throughout

Welcome

Whether you eat in or we deliver to your home, you are assured of the same quality food direct from our kitchen.

High temperature indicating stickers for staff (and available free to customers) – we care about everyone staying safe while Covid is still around.



Freshly cooked food

Eat in, take away and home delivery

Sunday carvery

Catering for weddings and parties

Tabletop telephone ordering system



Join our local free loyalty club and get up to 25% off your food and drinks.

Hall Street, Long Melford, CO10 9JA

www.thegeorgeanddragonhotel.com

Telephone: 01787 371285

The George and Dragon Hotel



RECOMMENDED
ON RESTAURANT GURU
2020



Another reason
to choose us.